

# Massachusetts Department of Transportation

## 608374 West Springfield

### BL PDS Schedule Grouped by Area of Work



WBS	ID	Task Name	Start	Finish	Duration	Responsibility	Total Slack	Timeline																							
								14 H1	2015 H2	2015 H1	2016 H2	2016 H1	2017 H2	2017 H1	2018 H2	2018 H1	2019 H2	2019 H1	2020 H2	2020 H1	2021 H2	2021 H1	2022 H2	2022 H1	2023 H2	2023 H1	2024 H2	2024 H1	2025 H2	2025 H1	2026 H2
CNT	1	<b>Contract/Project Management</b>	Wed 4/1/15	Wed 2/18/26	3977d		0d	▼ Contract/Project Management																							
CNT.MS	2	<b>Project Milestones</b>	Wed 4/1/15	Wed 2/18/26	3977d		0d	▼ Project Milestones																							
CNT.MS.010	3	Issue Design Contract NTP	Wed 4/1/15	Wed 4/1/15	0d	MassDOT.PM	780d	◆ Issue Design Contract NTP																							
CNT.MS.020	4	PM Submits Documents for Advertising	Mon 5/23/22	Mon 5/23/22	1d	MassDOT.PM	0d																								
CNT.MS.030	5	Submit Mylar Title Sheet and Final Plans	Mon 5/23/22	Mon 5/23/22	0d	Consultants.DES	43d	◆ Submit Mylar Title Sheet and Final Plans																							
CNT.MS.040	6	Prepare for Advertise	Tue 5/24/22	Fri 6/3/22	11d	MassDOT.FAPO	0d																								
CNT.MS.050	7	Advertise Construction Contract	Sat 6/4/22	Sat 6/4/22	1d	MassDOT.PM	0d	◆ Advertise Construction Contract																							
CNT.MS.060	8	Release Bid Documents	Wed 6/8/22	Wed 6/8/22	1d	MassDOT.PM	0d																								
CNT.MS.070	9	Contractor Prepares Bids	Thu 6/9/22	Tue 7/5/22	27d	Consultants.Other	0d																								
CNT.MS.080	10	Bid Opening	Tue 7/5/22	Tue 7/5/22	0d	MassDOT.PM	0d	◆ Bid Opening																							
CNT.MS.090	11	Issue Construction Contract NTP	Sat 9/3/22	Sat 9/3/22	0d	MassDOT.PM	0d	◆ Issue Construction Contract NTP																							
CNT.MS.100	12	Scope of Service Complete	Wed 2/18/26	Wed 2/18/26	0d	MassDOT.PM	0d	◆ Scope of Service Complete																							
CNT.100	13	<b>Project Development</b>	Wed 4/1/15	Thu 1/6/22	2473d		1504d	▼ Project Development																							
CNT.100.010	14	Finalize Project Plan and Design Schedule	Wed 4/1/15	Thu 4/30/15	30d	Consultants.DES	1504d																								
CNT.100.020	15	Project Design Schedule Updates	Fri 5/1/15	Thu 1/6/22	2443d	Consultants.DES	1504d																								
HWY	16	<b>Highway Design</b>	Wed 4/1/15	Tue 5/17/22	2604d		828d	▼ Highway Design																							
HWY.200	17	<b>Functional Design Report</b>	Tue 8/29/17	Tue 2/27/18	183d		47d	▼ Functional Design Report																							
HWY.200.010	18	Prepare Functional Design Report	Tue 8/29/17	Fri 10/27/17	60d	Consultants.DES	47d																								
HWY.200.020	19	Submit Functional Design Report	Fri 10/27/17	Fri 10/27/17	0d	Consultants.DES	47d	◆ Submit Functional Design Report																							
HWY.200.030	20	Review Functional Design Report	Sat 10/28/17	Tue 2/27/18	123d	MassDOT.HW	47d																								
HWY.200.040	21	Approval of Functional Design Report	Tue 2/27/18	Tue 2/27/18	0d	MassDOT.HW	47d	◆ Approval of Functional Design Report																							
HWY.220	22	<b>Design Exception Report</b>	Wed 12/16/20	Sat 9/4/21	263d		1628d	▼ Design Exception Report																							
HWY.220.010	23	Prepare Design Exception Report	Wed 12/16/20	Fri 1/22/21	38d	Consultants.DES	1823d																								
HWY.220.020	24	Submit Design Exception Report	Fri 1/22/21	Fri 1/22/21	0d	Consultants.DES	1823d	◆ Submit Design Exception Report																							
HWY.220.030	25	Review Design Exception Report	Sat 1/23/21	Sun 2/21/21	30d	MassDOT.HW	1823d																								

Task █ Milestone ◆ Summary ▬ Critical Path █

# Massachusetts Department of Transportation

## 608374 West Springfield

### BL PDS Schedule Grouped by Area of Work



WBS	ID	Task Name	Start	Finish	Duration	Responsibility	Total Slack	14	2015	2016	2017	2018	2019	2020	2021	2022	2023	2024	2025	2026	2027	2028	2029	
								H1	H2	H1	H2	H1	H2	H1	H2	H1	H2	H1	H2	H1	H2	H1	H2	H1
HWY.220.*	26	Submit Design Exception Report Rev1	Tue 7/6/21	Tue 7/6/21	0d		1628d																	◆ Submit Design Exception Report Rev1
HWY.220.040	27	Approval of Design Exception Report	Thu 8/5/21	Thu 8/5/21	0d	MassDOT.HW	1628d																	◆ Approval of Design Exception Report
HWY.220.050	28	Approval of Design Exception Report by Chief Engineer	Sat 9/4/21	Sat 9/4/21	0d	MassDOT.HW	1628d																	◆ Approval of Design Exception Report by Chief Engineer
HWY.230	29	<b>Healthy Transportation Waiver (N/A)</b>	<b>Sat 6/27/15</b>	<b>Sat 9/4/21</b>	<b>2261d</b>		<b>1628d</b>																	◆ Healthy Transportation Waiver (N/A)
HWY.303	35	<b>Conduct Survey</b>	<b>Wed 4/1/15</b>	<b>Sat 6/27/15</b>	<b>88d</b>		<b>780d</b>																	◆ Conduct Survey
HWY.303.010	36	Conduct Survey (MassDOT) (N/A)	Wed 4/1/15	Wed 4/1/15	0d	MassDOT.HW	868d																	◆ Conduct Survey (MassDOT) (N/A)
HWY.303.020	37	Conduct Survey	Tue 5/19/15	Sat 6/27/15	40d	Consultants.DES	780d																	◆ Conduct Survey
HWY.250	38	<b>Pre-25% Design</b>	<b>Wed 4/1/15</b>	<b>Wed 12/28/16</b>	<b>637d</b>		<b>867d</b>																	◆ Pre-25% Design
HWY.250.010	39	Pre-25% Design Scoping Meeting	Wed 4/1/15	Wed 4/1/15	0d	MassDOT.HW	927d																	◆ Pre-25% Design Scoping Meeting
HWY.250.020	40	Prepare Conceptual Design	Thu 4/2/15	Mon 12/12/16	621d	Consultants.DES	927d																	◆ Prepare Conceptual Design
HWY.250.030	41	Conduct Over the Shoulder Review	Wed 12/28/16	Wed 12/28/16	1d	Consultants.DES	3339d																	◆ Conduct Over the Shoulder Review
HWY.250.040	42	Conduct Public Information Meeting	Mon 6/8/15	Mon 6/8/15	0d	MassDOT.PM	800d																	◆ Conduct Public Information Meeting
HWY.300	43	<b>25% Highway Design Submission</b>	<b>Fri 6/30/17</b>	<b>Tue 7/17/18</b>	<b>383d</b>		<b>47d</b>																	◆ 25% Highway Design Submission
HWY.300.010	44	Prepare 25% Highway Design Submission	Fri 6/30/17	Fri 10/27/17	120d	Consultants.DES	47d																	◆ Prepare 25% Highway Design Submission
HWY.300.020	45	Submit 25% Design Submission	Fri 10/27/17	Fri 10/27/17	0d	Consultants.DES	47d																	◆ Submit 25% Design Submission
HWY.300.040	46	Review 25% Highway Design Submission	Sat 10/28/17	Tue 2/27/18	123d	MassDOT.HW	47d																	◆ Review 25% Highway Design Submission
HWY.300.011	47	Prepare 25% Highway Design Submission Rev1 (N/A)	Tue 2/27/18	Tue 2/27/18	0d	Consultants.DES	48d																	◆ Prepare 25% Highway Design Submission Rev1 (N/A)
HWY.300.021	48	Submit 25% Highway Design Submission Rev1 (N/A)	Tue 2/27/18	Tue 2/27/18	0d	Consultants.DES	48d																	◆ Submit 25% Highway Design Submission Rev1 (N/A)
HWY.300.041	49	Review 25% Highway Design Submission Rev1 (N/A)	Tue 2/27/18	Tue 2/27/18	0d	MassDOT.HW	48d																	◆ Review 25% Highway Design Submission Rev1 (N/A)
HWY.300.050	50	All Sections 25% Highway Design Comments sent to DE	Wed 2/28/18	Wed 2/28/18	1d	MassDOT.PM	47d																	◆ All Sections 25% Highway Design Comments sent to DE
HWY.300.070	51	Prepare 25% Design Responses	Fri 6/1/18	Tue 7/17/18	47d	Consultants.DES	47d																	◆ Prepare 25% Design Responses
HWY.300.080	52	Comment Resolution Meeting @25% (Full Team)	Tue 7/17/18	Tue 7/17/18	0d	MassDOT.PM	47d																	◆ Comment Resolution Meeting @25% (Full Team)
HWY.300.090	53	Utility Early Coordination Field Meeting	Thu 5/24/18	Thu 5/24/18	0d	MassDOT.PM	241d																	◆ Utility Early Coordination Field Meeting
HWY.310	54	<b>Circuit Ave - Design "Mini-Submission"</b>	<b>Wed 8/22/18</b>	<b>Mon 12/3/18</b>	<b>104d</b>		<b>47d</b>																	◆ Circuit Ave - Design "Mini-Submission"
HWY.310.010	55	Prepare Circuit Ave "Mini-Submission"	Wed 8/22/18	Fri 10/19/18	59d	Consultants.DES	47d																	◆ Prepare Circuit Ave "Mini-Submission"

Task █ Milestone ◆ Summary ▬ Critical Path █

**Massachusetts Department of Transportation**  
**608374 West Springfield**  
**BL PDS Schedule Grouped by Area of Work**



WBS	ID	Task Name	Start	Finish	Duration	Responsibility	Total Slack	14	2015	2016	2017	2018	2019	2020	2021	2022	2023	2024	2025	2026	2027	2028	2029
								H1	H2	H1	H2	H1	H2	H1	H2	H1	H2	H1	H2	H1	H2	H1	H2
HWY.310.020	56	Submit Circuit Ave "Mini-Submission"	Fri 10/19/18	Fri 10/19/18	0d	Consultants.DES	47d						◆	<b>Submit Circuit Ave "Mini-Submission"</b>									
HWY.310.030	57	Review Circuit Ave "Mini-Submission"	Sat 10/20/18	Mon 12/3/18	45d	MassDOT.HW	47d					■											
HWY.350	58	<b>Design Public Hearing</b>	<b>Tue 12/4/18</b>	<b>Thu 5/30/19</b>	<b>178d</b>		<b>47d</b>						<b>▶ Design Public Hearing</b>										
HWY.350.010	59	Schedule Design Public Hearing	Tue 12/4/18	Mon 4/29/19	147d	MassDOT.PM	47d					■											
HWY.350.020	60	Conduct Public Hearing	Tue 4/30/19	Tue 4/30/19	1d	MassDOT.PM	47d																
HWY.350.030	61	Respond to Comments (Public Hearing)	Wed 5/1/19	Thu 5/30/19	30d	MassDOT.PM	933d					■											
HWY.400	62	<b>75% Highway Design Submission</b>	<b>Wed 5/1/19</b>	<b>Mon 3/29/21</b>	<b>698d</b>		<b>22d</b>						<b>▶ 75% Highway Design Submission</b>										
HWY.400.010	63	Prepare 75% Highway Design Submission	Wed 5/1/19	Wed 7/1/20	428d	Consultants.DES	47d					■											
HWY.400.020	64	Submit 75% Design Submission	Wed 7/1/20	Wed 7/1/20	0d	Consultants.DES	47d						<b>◆ Submit 75% Design Submission</b>										
HWY.400.030	65	Prepare 75% Construction Contract Time Determination	Thu 8/27/20	Fri 9/25/20	30d	Consultants.Other	51d																
HWY.400.040	66	Review 75% Highway Design Submission	Thu 7/2/20	Tue 9/29/20	90d	MassDOT.HW	47d					■											
HWY.400.011	67	Prepare 75% Highway Design Submission Rev1 (N/A)	Tue 9/29/20	Tue 9/29/20	0d	Consultants.DES	47d																
HWY.400.021	68	Submit 75% Highway Design Submission Rev1 (N/A)	Tue 9/29/20	Tue 9/29/20	0d	Consultants.DES	47d						<b>◆ Submit 75% Highway Design Submission Rev1 (N/A)</b>										
HWY.400.041	69	Review 75% Highway Design Submission Rev1 (N/A)	Tue 9/29/20	Tue 9/29/20	0d	MassDOT.HW	47d																
HWY.400.050	70	All Sections 75% Highway Design Comments sent to DE	Tue 9/29/20	Tue 9/29/20	0d	MassDOT.HW	47d						<b>◆ All Sections 75% Highway Design Comments sent to DE</b>										
HWY.400.070	71	Prepare 75% Design Responses	Wed 9/30/20	Fri 2/5/21	129d	Consultants.DES	47d					■											
HWY.400.080	72	Comment Resolution Meeting @75% (Full Team)	Mon 3/29/21	Mon 3/29/21	0d	MassDOT.PM	22d						<b>◆ Comment Resolution Meeting @75% (Full Team)</b>										
HWY.410	73	<b>On-Street Parking "Mini-Submission"</b>	<b>Wed 10/28/20</b>	<b>Sun 2/21/21</b>	<b>117d</b>		<b>52d</b>						<b>▶ On-Street Parking "Mini-Submission"</b>										
HWY.410.010	74	Prepare Parking Conceptual Plan	Wed 10/28/20	Thu 11/5/20	9d	Consultants.DES	52d																
HWY.410.020	75	Submit On-Street Parking Conceptual Plan	Thu 11/5/20	Thu 11/5/20	0d	Consultants.DES	52d						<b>◆ Submit On-Street Parking Conceptual Plan</b>										
HWY.410.030	76	On-Street Parking Conceptual Plan Review Meeting	Tue 12/15/20	Tue 12/15/20	1d	MassDOT.PM	52d																
HWY.410.040	77	Prepare On-Street Parking "Mini-Submission"	Wed 12/16/20	Fri 1/22/21	38d	Consultants.DES	52d					■											
HWY.410.050	78	Submit On-Street Parking "Mini-Submission"	Fri 1/22/21	Fri 1/22/21	0d	Consultants.DES	52d						<b>◆ Submit On-Street Parking "Mini-Submission"</b>										
HWY.410.060	79	Review On-Street Parking "Mini Submission"	Sat 1/23/21	Sun 2/21/21	30d	MassDOT.HW	52d																
HWY.450	80	<b>100% Highway Design Submission</b>	<b>Mon 3/29/21</b>	<b>Thu 11/18/21</b>	<b>235d</b>		<b>22d</b>						<b>▶ 100% Highway Design Submission</b>										

Task █ Milestone ◆ Summary █ Critical Path █

**Massachusetts Department of Transportation**  
**608374 West Springfield**  
**BL PDS Schedule Grouped by Area of Work**



WBS	ID	Task Name	Start	Finish	Duration	Responsibility	Total Slack	2014	2015	2016	2017	2018	2019	2020	2021	2022	2023	2024	2025	2026	2027	2028	2029
								H1	H2	H1	H2	H1	H2	H1	H2	H1	H2	H1	H2	H1	H2	H1	H2
HWY.450.010	81	Prepare 100% Highway Design Submission	Mon 3/29/21	Tue 7/6/21	100d	Consultants.DES	22d																
HWY.450.020	82	Submit 100% Design Submission	Tue 7/6/21	Tue 7/6/21	0d	Consultants.DES	22d																
HWY.450.030	83	Finalize Construction Contract Time Determination	Sat 7/17/21	Thu 11/18/21	125d	Consultants.Other	1553d																
HWY.450.040	84	Review 100% Highway Design Submission	Wed 7/7/21	Sat 9/4/21	60d	MassDOT.HW	22d																
HWY.450.011	85	Prepare 100% Highway Design Submission Rev1 (N/A)	Sat 9/4/21	Sat 9/4/21	0d	Consultants.DES	22d																
HWY.450.021	86	Submit 100% Design Submission Rev1 (N/A)	Sat 9/4/21	Sat 9/4/21	0d	Consultants.DES	22d																
HWY.450.031	87	Review 100% Highway Design Submission Rev1 (N/A)	Sat 9/4/21	Sat 9/4/21	0d	MassDOT.HW	22d																
HWY.450.050	88	All Sections 100% Highway Design Comments sent to DE	Sat 9/4/21	Sat 9/4/21	0d	MassDOT.HW	22d																
HWY.450.070	89	Prepare 100% Design Responses	Mon 9/6/21	Fri 10/8/21	33d	Consultants.DES	22d																
HWY.450.070	90	Comment Resolution Meeting @100% (Full Team)	Tue 10/26/21	Tue 10/26/21	0d	MassDOT.PM	22d																
HWY.450.080	91	Approval of 100% Highway Design Submission	Tue 10/26/21	Tue 10/26/21	0d	MassDOT.HW	22d																
HWY.480	<b>92</b>	<b>Interim DUCE Submission</b>	<b>Fri 8/6/21</b>	<b>Wed 10/13/21</b>	<b>69d</b>		<b>45d</b>																
HWY.480.010	93	1st Utility Coordination Field Meeting	Fri 8/6/21	Fri 8/6/21	1d	MassDOT.HW	45d																
HWY.480.020	94	2nd Utility Coordination Field Meeting	Fri 8/20/21	Fri 8/20/21	1d	MassDOT.HW	45d																
HWY.480.030	95	Prepare Interim DUCE Submission	Mon 9/6/21	Wed 9/29/21	24d	Consultants.DES	45d																
HWY.480.040	96	Submit Interim DUCE Submission	Wed 9/29/21	Wed 9/29/21	0d	Consultants.DES	45d																
HWY.480.050	97	Review Interim DUCE Submission	Thu 9/30/21	Wed 10/13/21	14d	MassDOT.HW	45d																
HWY.800	<b>98</b>	<b>PS&amp;E Submittal</b>	<b>Wed 10/27/21</b>	<b>Tue 5/17/22</b>	<b>203d</b>		<b>5d</b>																
HWY.800.010	99	Prepare PS&E Submission	Wed 10/27/21	Thu 2/3/22	100d	Consultants.DES	22d																
HWY.800.020	100	Submit PS&E Submission	Thu 2/3/22	Thu 2/3/22	0d	Consultants.DES	22d																
HWY.800.040	101	Review PS&E Submission	Fri 2/4/22	Thu 2/10/22	7d	MassDOT.PM	22d																
HWY.800.045	102	Peer Review of PS&E Submission (if applicable)	Fri 2/11/22	Thu 3/3/22	21d	Consultants.Other	22d																
HWY.800.100	103	Approval of PS&E Submission	Thu 3/3/22	Thu 3/3/22	0d	MassDOT.HW	80d																
HWY.800.110	104	Submit Mylars	Thu 3/3/22	Thu 3/3/22	0d	Consultants.DES	22d																
HWY.800.120	105	Highway Design Scope Complete	Thu 3/3/22	Thu 3/3/22	0d	MassDOT.PM	22d																

Task Milestone Summary Critical Path

**Massachusetts Department of Transportation**  
**608374 West Springfield**  
**BL PDS Schedule Grouped by Area of Work**



WBS	ID	Task Name	Start	Finish	Duration	Responsibility	Total Slack	14	2015	2016	2017	2018	2019	2020	2021	2022	2023	2024	2025	2026	2027	2028	2029
								H1	H2	H1	H2	H1	H2	H1	H2	H1	H2	H1	H2	H1	H2	H1	H2
HWY.800.130	106	Submit PS&E to Specs	Thu 3/3/22	Thu 3/3/22	0d	MassDOT.PM	22d																
HWY.800.140	107	Ready for Initial Review	Fri 3/4/22	Wed 3/30/22	27d	MassDOT.Specification	22d																
HWY.800.150	108	Initial Review of Bid Documents	Thu 3/31/22	Sat 4/9/22	10d	MassDOT.Specification	22d																
HWY.800.160	109	Prepare Bid Documents - Rev1	Sun 4/10/22	Tue 4/12/22	3d	Consultants.DES	22d																
HWY.800.170	110	Submit Bid Documents to Specs - Rev 1	Tue 4/12/22	Tue 4/12/22	0d	MassDOT.PM	22d																
HWY.800.180	111	Approval of Bid Documents to Specs - Rev 1	Wed 4/13/22	Fri 4/15/22	3d	MassDOT.Specification	22d																
HWY.800.190	112	Submit to FAPRO	Mon 5/2/22	Mon 5/2/22	0d	MassDOT.PM	5d																
HWY.800.200	113	Ready for Final Review	Tue 5/3/22	Sat 5/7/22	5d	MassDOT.Specification	5d																
HWY.800.210	114	Final Review of Bid Documents	Sun 5/8/22	Mon 5/9/22	2d	MassDOT.Specification	5d																
HWY.800.220	115	Prepare Bid Documents - Rev 2	Tue 5/10/22	Thu 5/12/22	3d	Consultants.DES	5d																
HWY.800.230	116	Submit Bid Documents - Rev 2	Thu 5/12/22	Thu 5/12/22	0d	MassDOT.PM	5d																
HWY.800.240	117	Prepare Bid Package	Fri 5/13/22	Tue 5/17/22	5d	MassDOT.Specification	5d																
BRD	118	<b>Highway/Bridge Design</b>	<b>Mon 11/9/20</b>	<b>Thu 5/13/21</b>	<b>186d</b>		<b>1742d</b>																
BRD.600	119	<b>Geotechnical Design</b>	<b>Mon 11/9/20</b>	<b>Thu 5/13/21</b>	<b>186d</b>		<b>1742d</b>																
BRD.600.010	120	Prepare Boring Layout Plan	Mon 11/9/20	Fri 11/13/20	5d	Consultants.DES	1800d																
BRD.600.020	121	Perform Borings	Wed 4/14/21	Thu 5/13/21	30d	Consultants.DES	1742d																
BRD.600.030	122	Prepare Geotechnical Report (N/A)	Thu 5/13/21	Thu 5/13/21	0d	Consultants.DES	1742d																
BRD.600.040	123	Submit Geotechnical Report (N/A)	Thu 5/13/21	Thu 5/13/21	0d	Consultants.DES	1742d																
BRD.600.050	124	Review Geotechnical Report (N/A)	Thu 5/13/21	Thu 5/13/21	0d	MassDOT.GEO	1742d																
BRD.600.060	125	Approval of Geotech Report (N/A)	Thu 5/13/21	Thu 5/13/21	0d	MassDOT.HW	1742d																
ENV	126	<b>Environmental</b>	<b>Tue 8/29/17</b>	<b>Mon 12/6/21</b>	<b>1561d</b>		<b>47d</b>																
ENV.MS	127	<b>Environmental Milestones</b>	<b>Tue 4/30/19</b>	<b>Sat 11/13/21</b>	<b>928d</b>		<b>190d</b>																
ENV.MS.010	128	Wetland Permits Filed	Tue 4/30/19	Tue 4/30/19	0d	MassDOT.ENV	1118d																
ENV.MS.020	129	Issue Environmental Clearance	Sat 11/13/21	Sat 11/13/21	0d	MassDOT.ENV	190d																
ENV.151	130	<b>25% Early Environmental Coordination</b>	<b>Tue 8/29/17</b>	<b>Sat 2/24/18</b>	<b>180d</b>		<b>47d</b>																

Task █ Milestone ◆ Summary █ Critical Path █



**Massachusetts Department of Transportation**  
**608374 West Springfield**  
**BL PDS Schedule Grouped by Area of Work**



WBS	ID	Task Name	Start	Finish	Duration	Responsibility	Total Slack	2014	2015	2016	2017	2018	2019	2020	2021	2022	2023	2024	2025	2026	2027	2028	2029
								H1	H2	H1	H2	H1	H2	H1	H2	H1	H2	H1	H2	H1	H2	H1	H2
ENV.151.010	131	Perform 25% Early Environmental Coordination	Tue 8/29/17	Fri 10/27/17	60d	Consultants.DES	47d																
ENV.151.020	132	Submit 25% Early Environmental Coordination	Fri 10/27/17	Fri 10/27/17	0d	Consultants.DES	329d																
ENV.151.030	133	Review 25% Early Environmental Coordination	Sat 10/28/17	Sat 2/24/18	120d	MassDOT.ENV	329d																
ENV.151.040	134	Approve 25% Early Environmental Coordination for DPH	Sat 2/24/18	Sat 2/24/18	0d	MassDOT.ENV	329d																
ENV.152	135	<b>State or Federal Historic Review</b>	<b>Tue 5/11/21</b>	<b>Mon 12/6/21</b>	<b>210d</b>		<b>118d</b>																
ENV.152.010	136	Conduct Historic Impact Analysis	Tue 5/11/21	Wed 6/9/21	30d	MassDOT.ENV	118d																
ENV.152.020	137	Effect Finding Determined	Thu 6/10/21	Mon 7/26/21	47d	MassDOT.ENV	118d																
ENV.152.030	138	Submit Effect Finding to Agency	Mon 7/26/21	Mon 7/26/21	0d	MassDOT.ENV	118d																
ENV.152.040	139	Agency Review of Effect Finding	Tue 7/27/21	Fri 8/20/21	25d	Agencies.MHC	118d																
ENV.152.050	140	Approve Effect Finding	Fri 8/20/21	Fri 8/20/21	0d	Agencies.MHC	118d																
ENV.152.100	141	<b>Wildlife/Rare Species Assessment</b>	<b>Mon 8/9/21</b>	<b>Mon 12/6/21</b>	<b>120d</b>		<b>1535d</b>																
ENV.152.100.1	142	Request MESA Rare Species Survey	Mon 8/9/21	Tue 9/7/21	30d	MassDOT.ENV	1535d																
ENV.152.100.2	143	Determine MESA Habitat	Wed 9/8/21	Thu 10/7/21	30d	Agencies	1535d																
ENV.152.100.3	144	Review and File MESA	Fri 10/8/21	Mon 12/6/21	60d	MassDOT.ENV	1535d																
ENV.152.100.4	145	Approve MESA	Mon 12/6/21	Mon 12/6/21	0d	Agencies	1535d																
ENV.157	146	<b>NEPA-Categorical Exclusion (CE)</b>	<b>Mon 6/15/20</b>	<b>Sat 11/13/21</b>	<b>517d</b>		<b>63d</b>																
ENV.157.010	147	Prepare Categorical Exclusion	Mon 6/15/20	Fri 7/31/20	47d	Consultants.DES	488d																
ENV.157.020	148	Submit Categorical Exclusion	Fri 7/31/20	Fri 7/31/20	0d	Consultants.DES	488d																
ENV.157.030	149	Review Categorical Exclusion	Sat 8/1/20	Sat 8/15/20	15d	MassDOT.ENV	488d																
ENV.157.040	150	Review Categorical Exclusion by FHWA	Fri 10/15/21	Sat 11/13/21	30d	Agencies.FHWA	63d																
ENV.157.050	151	Approve Categorical Exclusion	Sat 11/13/21	Sat 11/13/21	0d	MassDOT.ENV or Agencies.FHWA	63d																
ENV.158	152	<b>MEPA-Environmental Notification Form (ENF)</b>	<b>Mon 4/20/20</b>	<b>Thu 10/14/21</b>	<b>543d</b>		<b>63d</b>																
ENV.158.010	153	Prepare Draft ENF	Mon 4/20/20	Mon 8/17/20	120d	Consultants.DES	63d																
ENV.158.020	154	Submit Draft ENF	Mon 8/17/20	Mon 8/17/20	0d	Consultants.DES	63d																

Task  Milestone  Summary  Critical Path

**Massachusetts Department of Transportation**  
**608374 West Springfield**  
**BL PDS Schedule Grouped by Area of Work**



WBS	ID	Task Name	Start	Finish	Duration	Responsibility	Total Slack	14	2015	2016	2017	2018	2019	2020	2021	2022	2023	2024	2025	2026	2027	2028	2029
								H1	H2	H1	H2	H1	H2	H1	H2	H1	H2	H1	H2	H1	H2	H1	H2
ENV.158.030	155	Review Draft ENF	Tue 8/18/20	Tue 3/30/21	225d	MassDOT.ENV	63d																
ENV.158.040	156	Revise and File ENF	Wed 3/31/21	Tue 9/14/21	168d	Agencies.FHWA	63d																
ENV.158.050	157	Agency Review of ENF	Wed 9/15/21	Thu 10/14/21	30d	MassDOT.ENV or Agencies.FHWA	63d																
ENV.171	158	<b>404 Permit - ACOE PGP/SV (N/A)</b>	<b>Tue 4/30/19</b>	<b>Tue 4/30/19</b>	<b>0d</b>		<b>1118d</b>																
ENV.173	163	<b>De minimis 4(f) (N/A)</b>	<b>Thu 1/25/18</b>	<b>Thu 1/25/18</b>	<b>0d</b>		<b>1451d</b>																
ENV.182	171	<b>Water Quality Certification (N/A)</b>	<b>Tue 4/30/19</b>	<b>Tue 4/30/19</b>	<b>0d</b>		<b>1118d</b>																
ENV.185	178	<b>Notice of Intent (N/A)</b>	<b>Tue 4/30/19</b>	<b>Tue 4/30/19</b>	<b>0d</b>		<b>1118d</b>																
ROW	184	<b>Right of Way</b>	<b>Tue 8/29/17</b>	<b>Sun 6/4/23</b>	<b>2106d</b>		<b>47d</b>																
ROW.501	185	<b>25% ROW Plans</b>	<b>Tue 8/29/17</b>	<b>Thu 1/25/18</b>	<b>150d</b>		<b>47d</b>																
ROW.501.010	186	Prepare 25% ROW Plans	Tue 8/29/17	Fri 10/27/17	60d	Consultants.DES	47d																
ROW.501.020	187	Submit 25% ROW Plans	Fri 10/27/17	Fri 10/27/17	0d	Consultants.DES	359d																
ROW.501.030	188	Review 25% ROW Plans	Sat 10/28/17	Sun 11/26/17	30d	MassDOT.ROW	359d																
ROW.501.011	189	Prepare 25% ROW Plans Rev1	Mon 11/27/17	Tue 12/26/17	30d	Consultants.DES	359d																
ROW.501.021	190	Submit 25% ROW Plans Rev1	Tue 12/26/17	Tue 12/26/17	0d	Consultants.DES	359d																
ROW.501.031	191	Review 25% ROW Plans Rev1	Wed 12/27/17	Thu 1/25/18	30d	MassDOT.ROW	359d																
ROW.502	192	<b>Preliminary State ROW Plans (N/A)</b>	<b>Thu 5/30/19</b>	<b>Thu 5/30/19</b>	<b>0d</b>		<b>0d</b>																
ROW.503	226	<b>Preliminary Municipal ROW Plans</b>	<b>Tue 4/30/19</b>	<b>Mon 5/2/22</b>	<b>1099d</b>		<b>591d</b>																
ROW.503.01	227	<b>Municipal Review Process</b>	<b>Sun 5/3/20</b>	<b>Tue 11/16/21</b>	<b>563d</b>		<b>32d</b>																
ROW.503.01.010	228	Prepare 75% ROW Plans	Sun 5/3/20	Wed 7/1/20	60d	Consultants.DES	222d																
ROW.503.01.020	229	Submit 75% ROW Plans	Wed 7/1/20	Wed 7/1/20	0d	Consultants.DES	222d																
ROW.503.01.030	230	Review 75% ROW Plans	Thu 7/2/20	Fri 7/31/20	30d	MassDOT.ROW	222d																
ROW.503.01.011	231	Prepare 75% ROW Plans Rev1	Sat 8/1/20	Sun 8/30/20	30d	Consultants.DES	222d																
ROW.503.01.021	232	Submit 75% ROW Plans Rev1	Sun 8/30/20	Sun 8/30/20	0d	Consultants.DES	222d																
ROW.503.01.031	233	Review 75% ROW Plans Rev1	Mon 8/31/20	Tue 9/29/20	30d	MassDOT.ROW	222d																

Task Milestone Summary Critical Path

# Massachusetts Department of Transportation

## 608374 West Springfield

### BL PDS Schedule Grouped by Area of Work



WBS	ID	Task Name	Start	Finish	Duration	Responsibility	Total Slack	14	2015	2016	2017	2018	2019	2020	2021	2022	2023	2024	2025	2026	2027	2028	2029
								H1	H2	H1	H2	H1	H2	H1	H2	H1	H2	H1	H2	H1	H2	H1	H2
ROW.503.01.053	234	Prepare 75% ROW Plans Rev2	Wed 9/30/20	Wed 10/14/20	15d	Consultants.DES	222d																
ROW.503.01.052	235	Submit 75% ROW Plans Rev2	Wed 10/14/20	Wed 10/14/20	0d	Consultants.DES	222d																
ROW.503.01.051	236	Review 75% ROW Plans Rev2	Thu 10/15/20	Thu 10/29/20	15d	MassDOT.ROW	222d																
ROW.503.01.040	237	Approve 75% ROW Plans	Mon 3/29/21	Mon 3/29/21	0d	MassDOT.ROW	72d																
ROW.503.01.012	238	Prepare 100% ROW Plans	Sat 5/8/21	Tue 7/6/21	60d	Consultants.DES	32d																
ROW.503.01.022	239	Submit 100% ROW Plans	Tue 7/6/21	Tue 7/6/21	0d	Consultants.DES	32d																
ROW.503.01.032	240	Review 100% ROW Plans	Wed 7/7/21	Sat 9/4/21	60d	MassDOT.ROW	32d																
ROW.503.01.013	241	Prepare 100% ROW Plans Rev1	Sun 9/5/21	Tue 11/2/21	59d	Consultants.DES	32d																
ROW.503.01.023	242	Submit 100% ROW Plans Rev1	Tue 11/2/21	Tue 11/2/21	0d	Consultants.DES	32d																
ROW.503.01.033	243	Review 100% ROW Plans Rev1	Wed 11/3/21	Tue 11/16/21	14d	MassDOT.ROW	32d																
ROW.503.01.050	244	Approve 100% ROW Plans	Tue 11/16/21	Tue 11/16/21	0d	MassDOT.ROW	32d																
ROW.503.02	245	<b>Municipal Acquisition Process</b>	<b>Tue 4/30/19</b>	<b>Mon 5/2/22</b>	<b>1099d</b>		<b>912d</b>																
ROW.503.02.010	246	Hold City Council Meeting	Mon 11/2/20	Mon 11/2/20	0d	Other.Municipality	470d																
ROW.503.02.020	247	Peform Title Exams (All TPI)	Fri 5/28/21	Mon 2/21/22	270d	Other.Municipality	1458d																
ROW.503.02.030	248	Contact Property Owners	Tue 4/30/19	Fri 1/28/22	1005d	Other.Municipality	1482d																
ROW.503.02.040	249	Perform Appraisals (All TPI)	Sat 10/23/21	Mon 1/10/22	80d	Other.Municipality	5d																
ROW.503.02.050	250	Prepare Layout Taking Plans & Instrument	Wed 11/17/21	Tue 12/7/21	21d	Consultants.DES	32d																
ROW.503.02.060	251	Submit Layout TPIs	Tue 12/7/21	Tue 12/7/21	0d	Consultants.DES	32d																
ROW.503.02.070	252	Review Layout TPIs	Wed 12/8/21	Tue 12/14/21	7d	MassDOT.ROW and Other.Municipality	32d																
ROW.503.02.051	253	Prepare Layout Taking Plans & Instrument Rev1	Tue 12/14/21	Tue 12/14/21	0d	Consultants.DES	32d																
ROW.503.02.061	254	Submit Layout TPIs Rev 1	Tue 12/14/21	Tue 12/14/21	0d	Consultants.DES	32d																
ROW.503.02.071	255	Review Layout TPIs Rev 1	Tue 12/14/21	Tue 12/14/21	0d	MassDOT.ROW and Other.Municipality	32d																
ROW.503.02.080	256	Approve Layout Taking Plans	Tue 12/14/21	Tue 12/14/21	0d	MassDOT.ROW and Other.Municipality	32d																

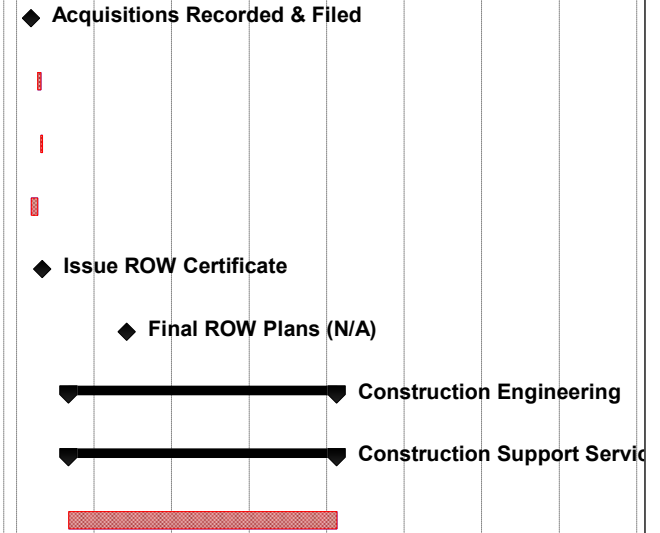
Task Milestone Summary Critical Path



**Massachusetts Department of Transportation**  
**608374 West Springfield**  
**BL PDS Schedule Grouped by Area of Work**



WBS	ID	Task Name	Start	Finish	Duration	Responsibility	Total Slack	14	2015	2016	2017	2018	2019	2020	2021	2022	2023	2024	2025	2026	2027	2028	2029
								H1	H2	H1	H2	H1	H2	H1	H2	H1	H2	H1	H2	H1	H2	H1	H2
ROW.503.02.090	257	Offer & Negotiations	Tue 1/11/22	Wed 2/9/22	30d	Other.Municipality	5d																
ROW.503.02.100	258	Municipal Approval, Record & File	Thu 2/10/22	Fri 3/11/22	30d	Other.Municipality	5d																
ROW.503.02.110	259	Acquisitions Recorded & Filed	Fri 3/11/22	Fri 3/11/22	0d	Other.Municipality	5d																
ROW.503.02.120	260	Submit Community Compliance Package	Mon 4/11/22	Mon 4/25/22	15d	Other.Municipality	5d																
ROW.503.02.130	261	Review Community Compliance Package	Tue 4/26/22	Mon 5/2/22	7d	MassDOT.ROW	5d																
ROW.503.02.140	262	Pay Award of Damages	Sat 3/12/22	Sun 4/10/22	30d	Other.Municipality	5d																
ROW.503.02.150	263	Issue ROW Certificate	Mon 5/2/22	Mon 5/2/22	0d	MassDOT.PM	5d																
ROW.504	264	Final ROW Plans (N/A)	Sun 6/4/23	Sun 6/4/23	0d		990d																
CSS	269	Construction Engineering	Sun 9/4/22	Wed 2/18/26	1264d		0d																
CSS.900	270	Construction Support Services	Sun 9/4/22	Wed 2/18/26	1264d		0d																
CSS.900.010	271	Construction Support Services	Sun 9/4/22	Wed 2/18/26	1264d	Consultants.DES	0d																



Task Milestone Summary Critical Path