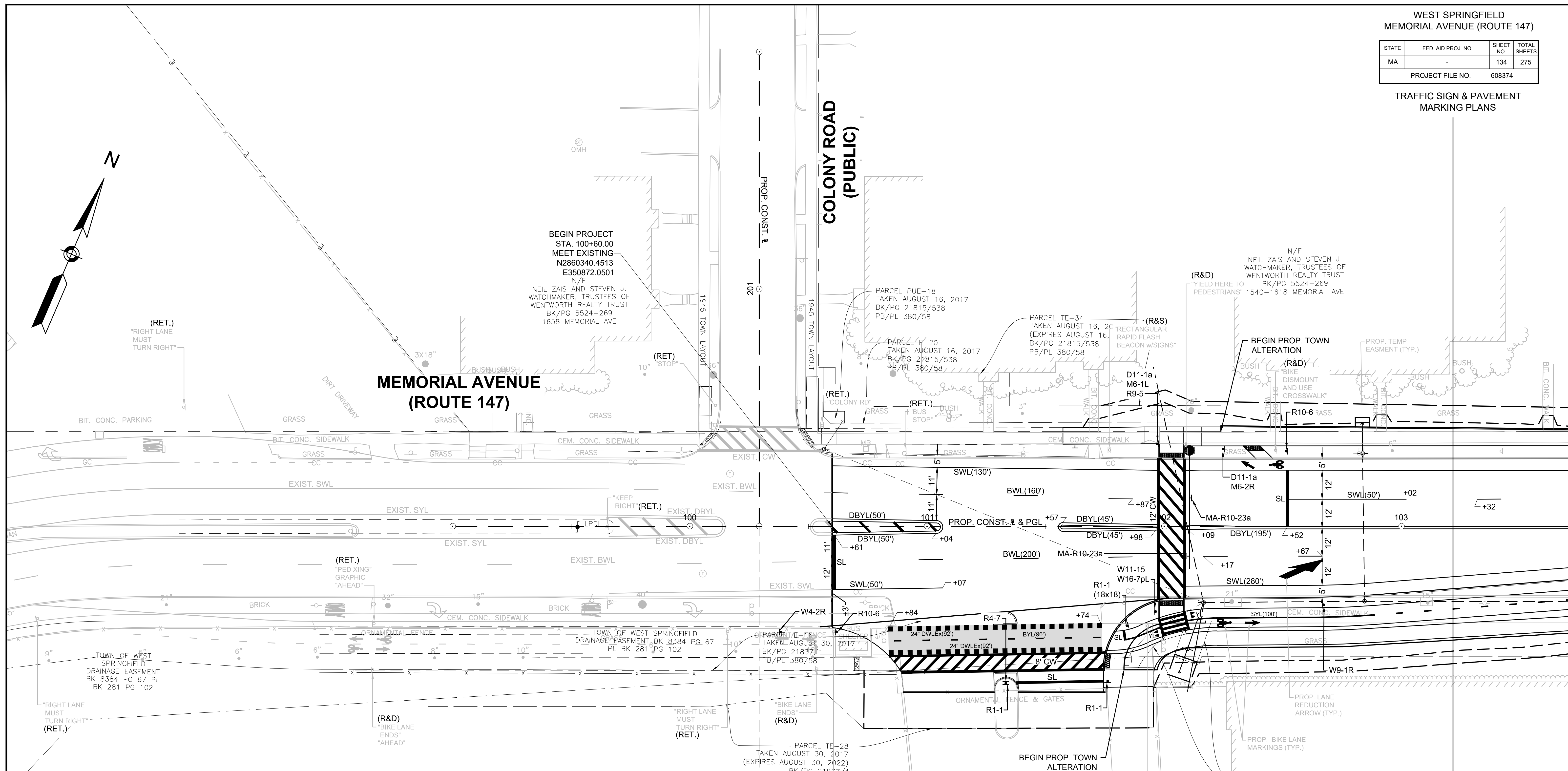
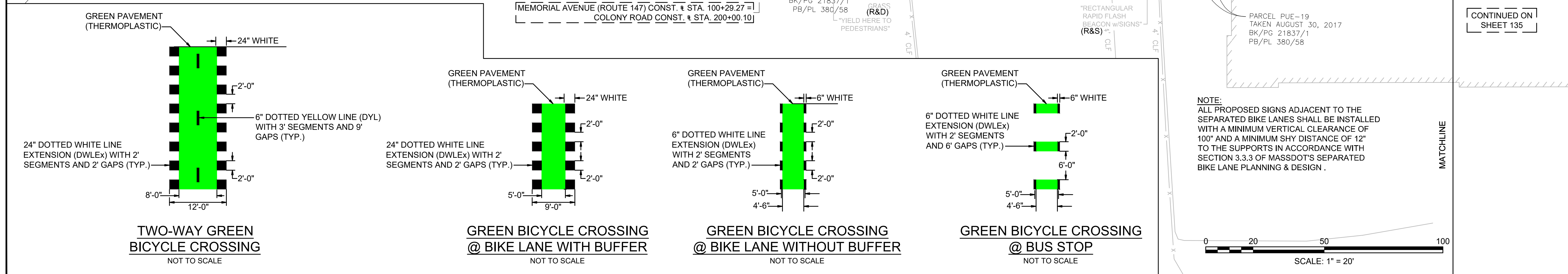


STATE	FED. AID PROJ. NO.	SHEET NO.	TOTAL SHEETS
MA	-	134	275
PROJECT FILE NO.		608374	

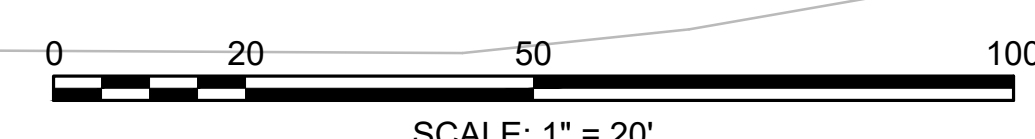
TRAFFIC SIGN & PAVEMENT MARKING PLANS



CONTINUED ON SHEET 135



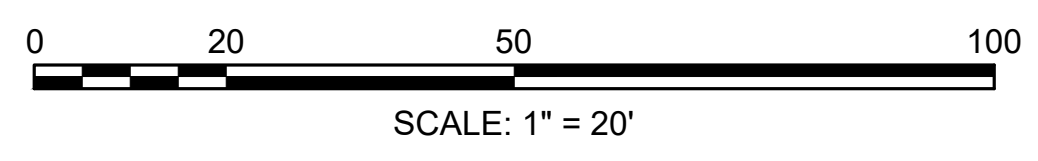
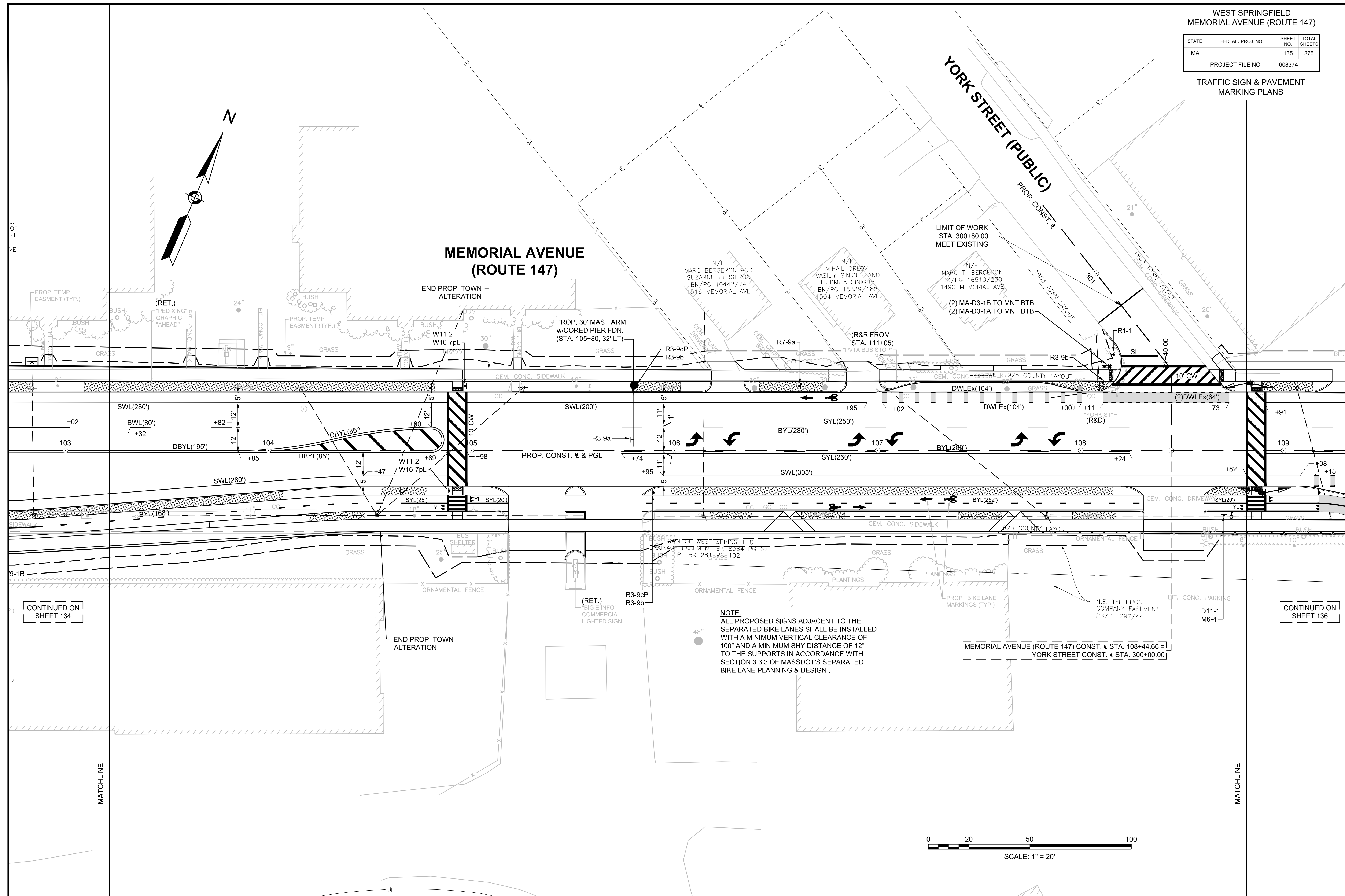
NOTE:
ALL PROPOSED SIGNS ADJACENT TO THE SEPARATED BIKE LANES SHALL BE INSTALLED WITH A MINIMUM VERTICAL CLEARANCE OF 10' AND A MINIMUM SHY DISTANCE OF 12' TO THE SUPPORTS IN ACCORDANCE WITH SECTION 3.3.3 OF MASSDOT'S SEPARATED BIKE LANE PLANNING & DESIGN.



WEST SPRINGFIELD
MEMORIAL AVENUE (ROUTE 147)

STATE	FED. AID PROJ. NO.	SHEET NO.	TOTAL SHEETS
MA	-	135	275
PROJECT FILE NO.		608374	

TRAFFIC SIGN & PAVEMENT MARKING PLANS



NOTE:
ALL PROPOSED SIGNS ADJACENT TO THE SEPARATED BIKE LANES SHALL BE INSTALLED WITH A MINIMUM VERTICAL CLEARANCE OF 100' AND A MINIMUM SHY DISTANCE OF 12" TO THE SUPPORTS IN ACCORDANCE WITH SECTION 3.3.3 OF MASSDOT'S SEPARATED BIKE LANE PLANNING & DESIGN.

CONTINUED ON SHEET 134

CONTINUED ON SHEET 136

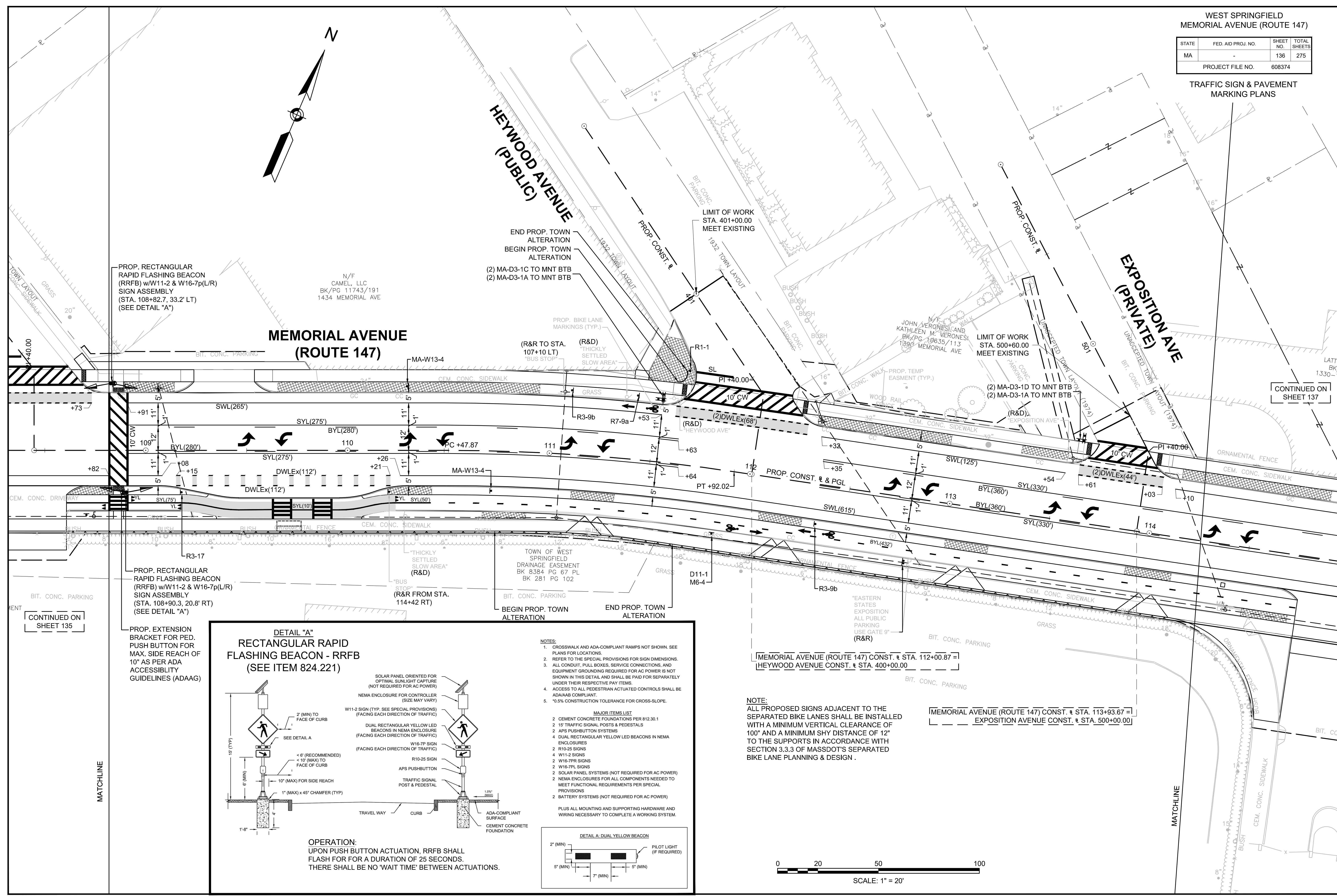
MATCHLINE

MATCHLINE

STATE	FED. AID PROJ. NO.	SHEET NO.	TOTAL SHEETS
MA	-	136	275
PROJECT FILE NO.		608374	

TRAFFIC SIGN & PAVEMENT MARKING PLANS

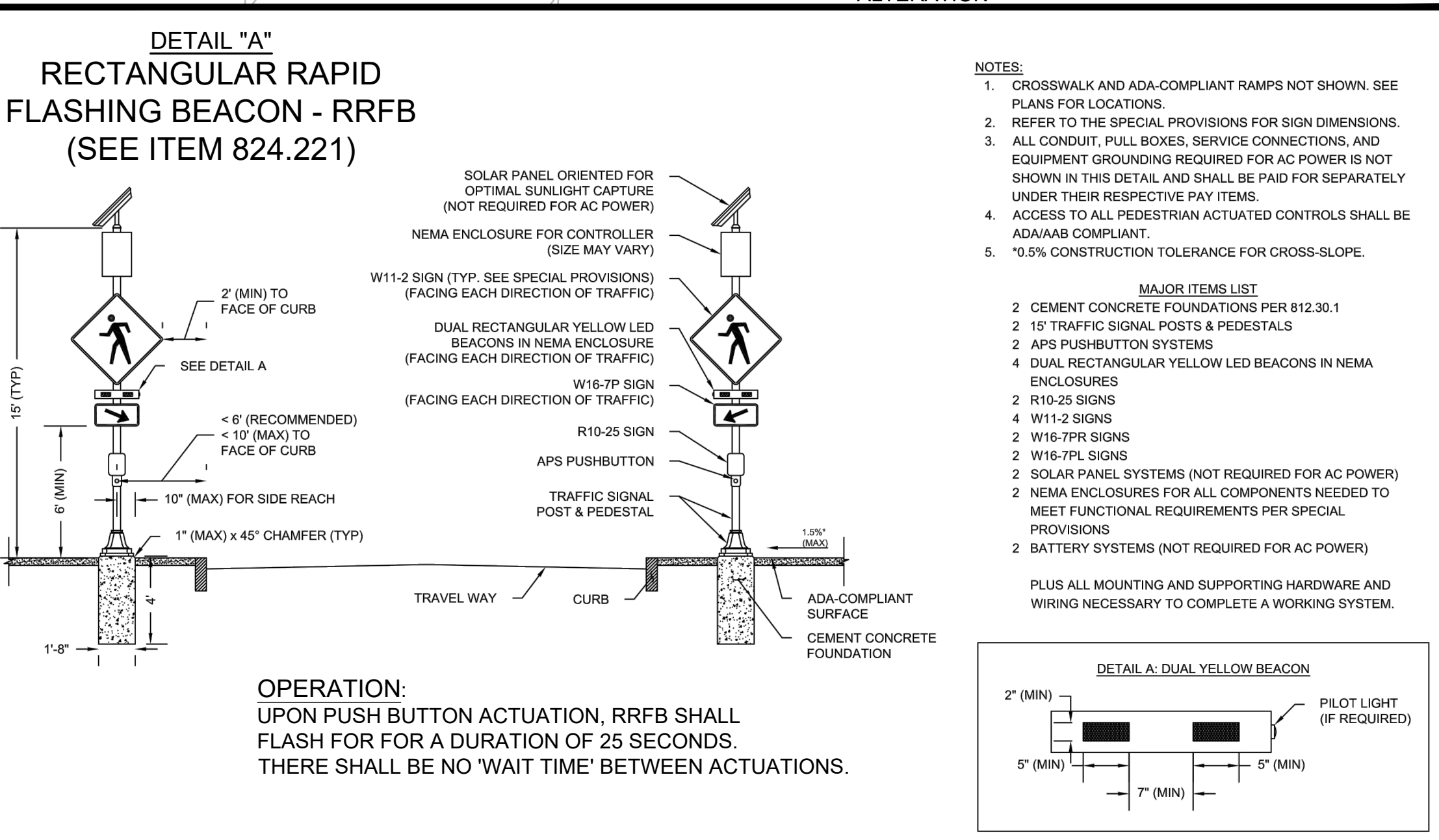
14145_HD_(RMS).DWG Picked on 30-Jun-2020 10:52 PM



PROP. RECTANGULAR RAPID FLASHING BEACON (RRFB) w/W11-2 & W16-7p(L/R) SIGN ASSEMBLY (STA. 108+82.7, 33.2' LT) (SEE DETAIL "A")

PROP. RECTANGULAR RAPID FLASHING BEACON (RRFB) w/W11-2 & W16-7p(L/R) SIGN ASSEMBLY (STA. 108+90.3, 20.8' RT) (SEE DETAIL "A")

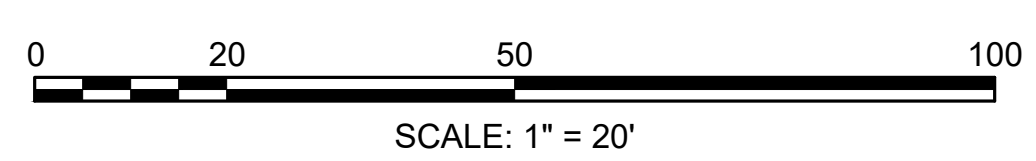
PROP. EXTENSION BRACKET FOR PED. PUSH BUTTON FOR MAX. SIDE REACH OF 10" AS PER ADA ACCESSIBILITY GUIDELINES (ADAAG)



- NOTES:**
- CROSSWALK AND ADA-COMPLIANT RAMPS NOT SHOWN. SEE PLANS FOR LOCATIONS.
 - REFER TO THE SPECIAL PROVISIONS FOR SIGN DIMENSIONS.
 - ALL CONDUIT, PULL BOXES, SERVICE CONNECTIONS, AND EQUIPMENT GROUNDING REQUIRED FOR AC POWER IS NOT SHOWN IN THIS DETAIL AND SHALL BE PAID FOR SEPARATELY UNDER THEIR RESPECTIVE PAY ITEMS.
 - ACCESS TO ALL PEDESTRIAN ACTUATED CONTROLS SHALL BE ADA/AAAB COMPLIANT.
 - 0.5% CONSTRUCTION TOLERANCE FOR CROSS-SLOPE.

- MAJOR ITEMS LIST**
- CEMENT CONCRETE FOUNDATIONS PER 812.30.1
 - 15' TRAFFIC SIGNAL POSTS & PEDESTALS
 - APS PUSHBUTTON SYSTEMS
 - DUAL RECTANGULAR YELLOW LED BEACONS IN NEMA ENCLOSURES
 - R10-25 SIGNS
 - W16-7P SIGNS
 - W16-7PL SIGNS
 - SOLAR PANEL SYSTEMS (NOT REQUIRED FOR AC POWER)
 - NEMA ENCLOSURES FOR ALL COMPONENTS NEEDED TO MEET FUNCTIONAL REQUIREMENTS PER SPECIAL PROVISIONS
 - BATTERY SYSTEMS (NOT REQUIRED FOR AC POWER)
- PLUS ALL MOUNTING AND SUPPORTING HARDWARE AND WIRING NECESSARY TO COMPLETE A WORKING SYSTEM.

NOTE:
ALL PROPOSED SIGNS ADJACENT TO THE SEPARATED BIKE LANES SHALL BE INSTALLED WITH A MINIMUM VERTICAL CLEARANCE OF 100" AND A MINIMUM SHY DISTANCE OF 12" TO THE SUPPORTS IN ACCORDANCE WITH SECTION 3.3.3 OF MASSDOT'S SEPARATED BIKE LANE PLANNING & DESIGN.



CONTINUED ON SHEET 137

CONTINUED ON SHEET 135

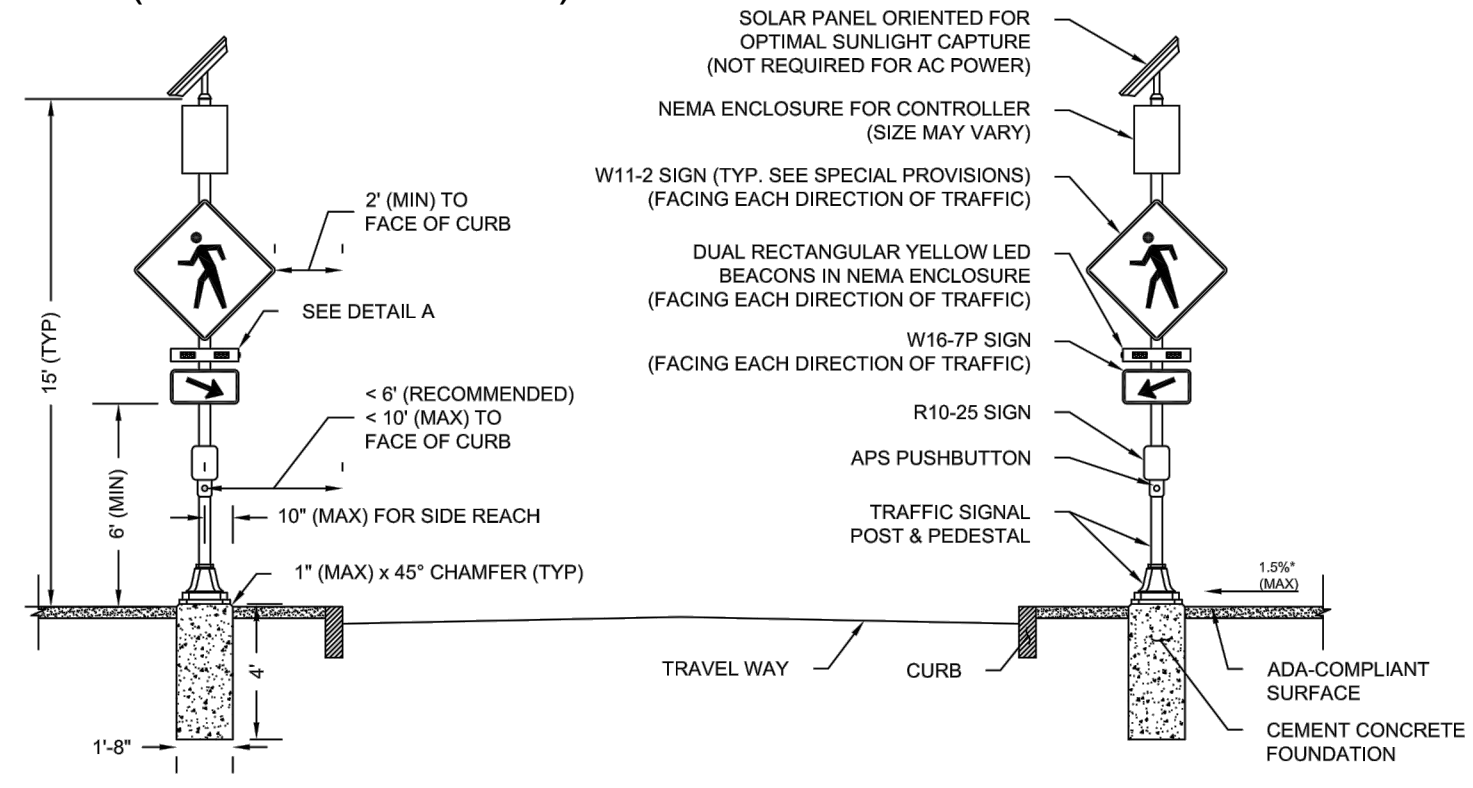
MATCHLINE

MATCHLINE

STATE	FED. AID PROJ. NO.	SHEET NO.	TOTAL SHEETS
MA		137	275
PROJECT FILE NO.		608374	

TRAFFIC SIGN & PAVEMENT MARKING PLANS

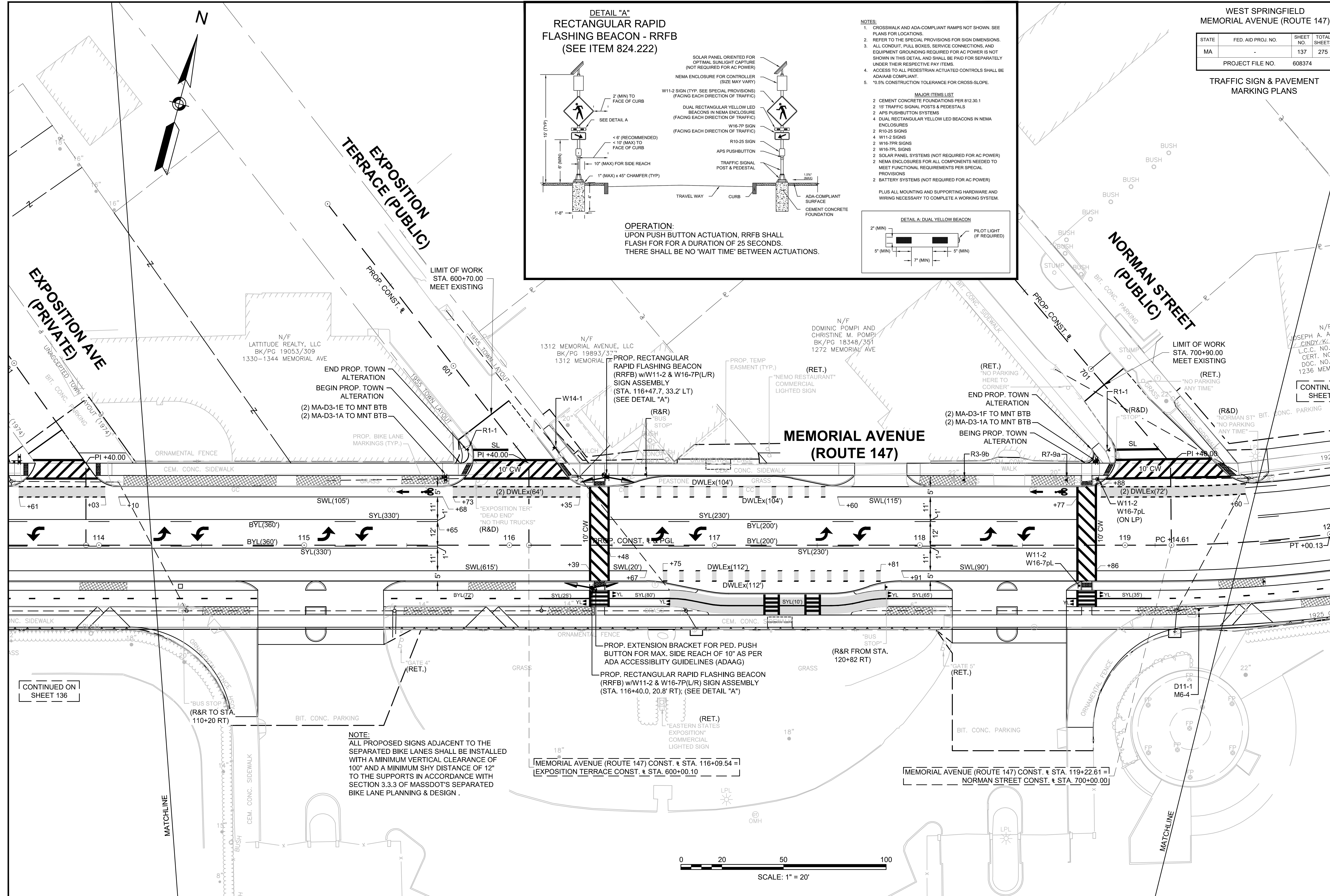
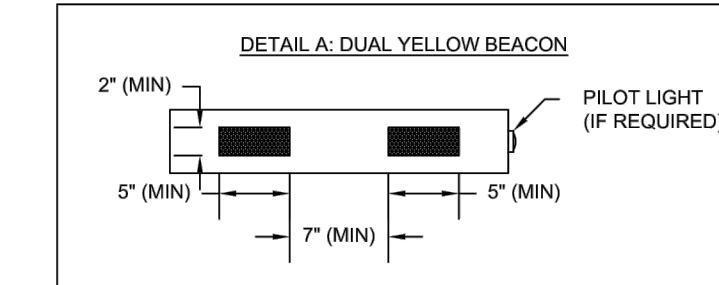
DETAIL "A"
RECTANGULAR RAPID
FLASHING BEACON - RRFB
(SEE ITEM 824.222)



OPERATION:
UPON PUSH BUTTON ACTUATION, RRFB SHALL FLASH FOR A DURATION OF 25 SECONDS. THERE SHALL BE NO "WAIT TIME" BETWEEN ACTUATIONS.

- NOTES:
- CROSSWALK AND ADA-COMPLIANT RAMPS NOT SHOWN. SEE PLANS FOR LOCATIONS.
 - REFER TO THE SPECIAL PROVISIONS FOR SIGN DIMENSIONS.
 - ALL CONDUIT, PULL BOXES, SERVICE CONNECTIONS, AND EQUIPMENT GROUNDING REQUIRED FOR AC POWER IS NOT SHOWN IN THIS DETAIL AND SHALL BE PAID FOR SEPARATELY UNDER THEIR RESPECTIVE PAY ITEMS.
 - ACCESS TO ALL PEDESTRIAN ACTUATED CONTROLS SHALL BE ADA/AB COMPLIANT.
 - 10.5% CONSTRUCTION TOLERANCE FOR CROSS-SLOPE.

- MAJOR ITEMS LIST
- CEMENT CONCRETE FOUNDATIONS PER 812.30.1
 - 15' TRAFFIC SIGNAL POSTS & PEDESTALS
 - APS PUSHBUTTON SYSTEMS
 - DUAL RECTANGULAR YELLOW LED BEACONS IN NEMA ENCLOSURES
 - 2 R10-25 SIGNS
 - 4 W11-2 SIGNS
 - 2 W16-7P SIGNS
 - 2 W16-7P L SIGNS
 - SOLAR PANEL SYSTEMS (NOT REQUIRED FOR AC POWER)
 - NEMA ENCLOSURES FOR ALL COMPONENTS NEEDED TO MEET FUNCTIONAL REQUIREMENTS PER SPECIAL PROVISIONS
 - BATTERY SYSTEMS (NOT REQUIRED FOR AC POWER)
- PLUS ALL MOUNTING AND SUPPORTING HARDWARE AND WIRING NECESSARY TO COMPLETE A WORKING SYSTEM.



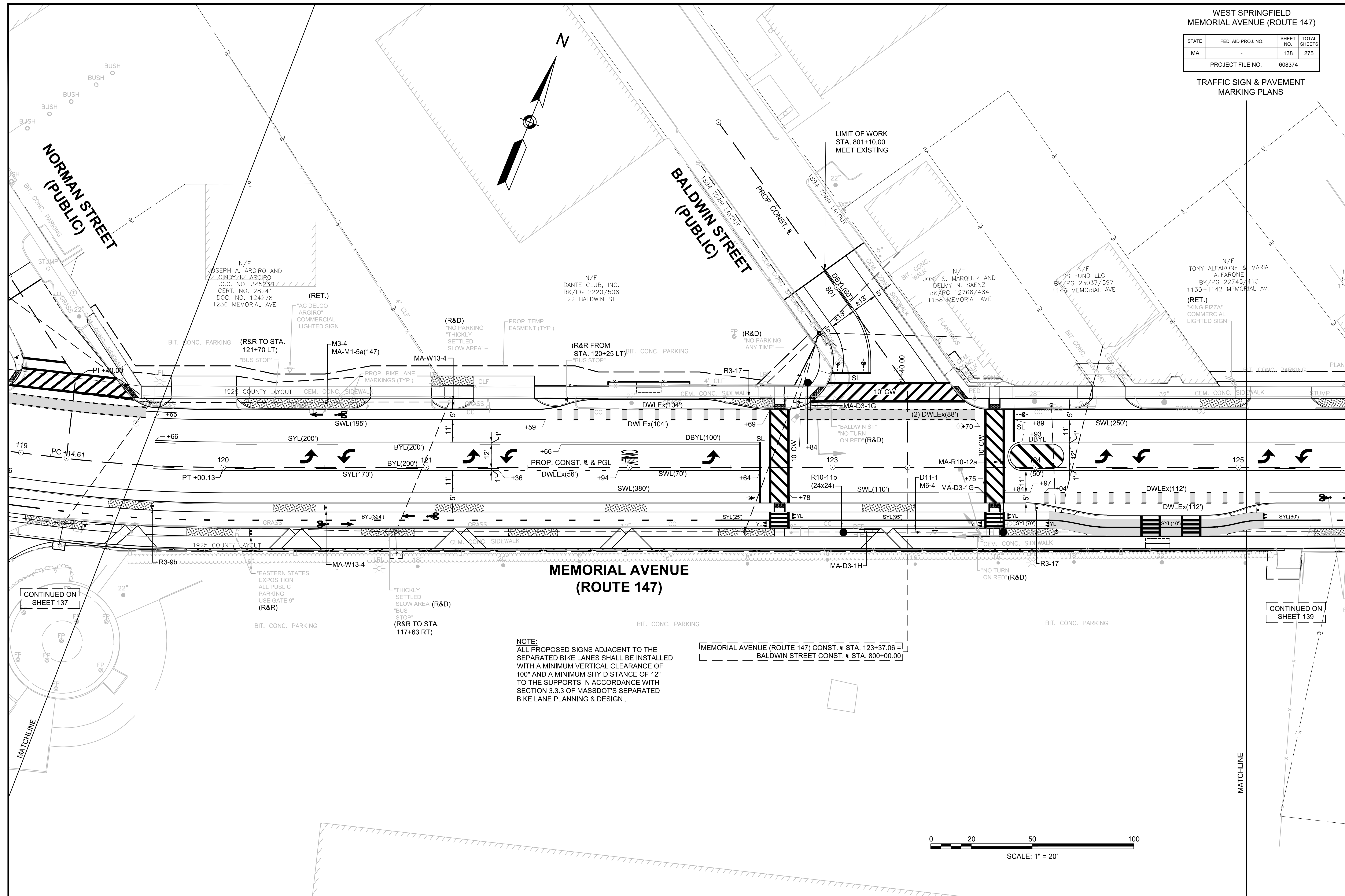
CONTINUED ON SHEET 138

CONTINUED ON SHEET 136

WEST SPRINGFIELD
MEMORIAL AVENUE (ROUTE 147)

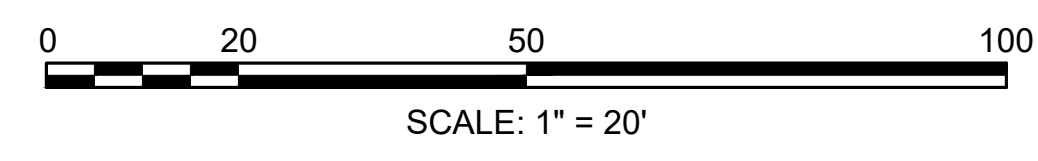
STATE	FED. AID PROJ. NO.	SHEET NO.	TOTAL SHEETS
MA	-	138	275
PROJECT FILE NO.		608374	

TRAFFIC SIGN & PAVEMENT MARKING PLANS



NOTE:
ALL PROPOSED SIGNS ADJACENT TO THE SEPARATED BIKE LANES SHALL BE INSTALLED WITH A MINIMUM VERTICAL CLEARANCE OF 100" AND A MINIMUM SHY DISTANCE OF 12" TO THE SUPPORTS IN ACCORDANCE WITH SECTION 3.3.3 OF MASSDOT'S SEPARATED BIKE LANE PLANNING & DESIGN.

MEMORIAL AVENUE (ROUTE 147) CONST. # STA. 123+37.06 =
BALDWIN STREET CONST. # STA. 800+00.00

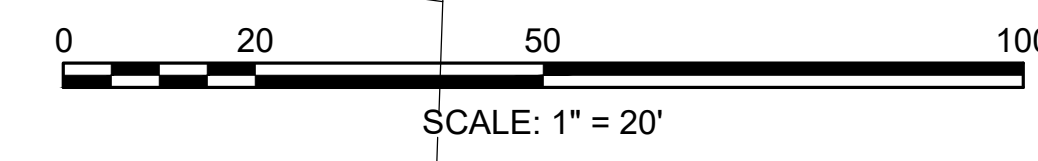
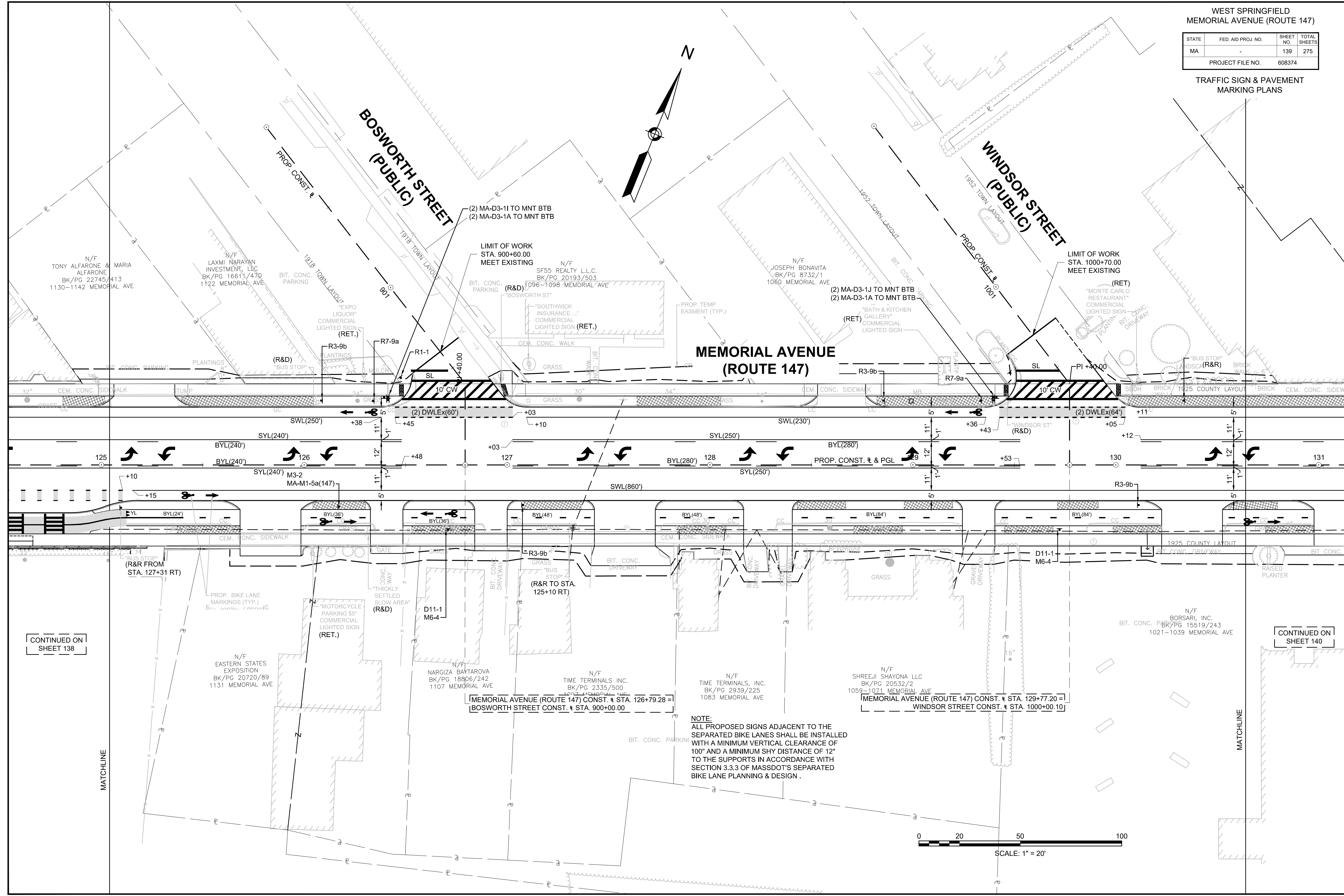
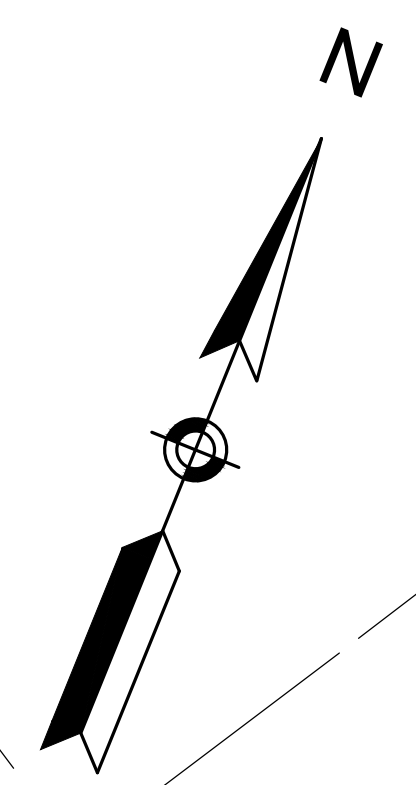


14145_HD_(RMS).DWG Picked on 30-Jun-2020 10:52 PM

WEST SPRINGFIELD
MEMORIAL AVENUE (ROUTE 147)

STATE	FED. AID PROJ. NO.	SHEET NO.	TOTAL SHEETS
MA	-	139	275
PROJECT FILE NO.		608374	

TRAFFIC SIGN & PAVEMENT MARKING PLANS



NOTE:
ALL PROPOSED SIGNS ADJACENT TO THE SEPARATED BIKE LANES SHALL BE INSTALLED WITH A MINIMUM VERTICAL CLEARANCE OF 100" AND A MINIMUM SHY DISTANCE OF 12" TO THE SUPPORTS IN ACCORDANCE WITH SECTION 3.3.3 OF MASSDOT'S SEPARATED BIKE LANE PLANNING & DESIGN.

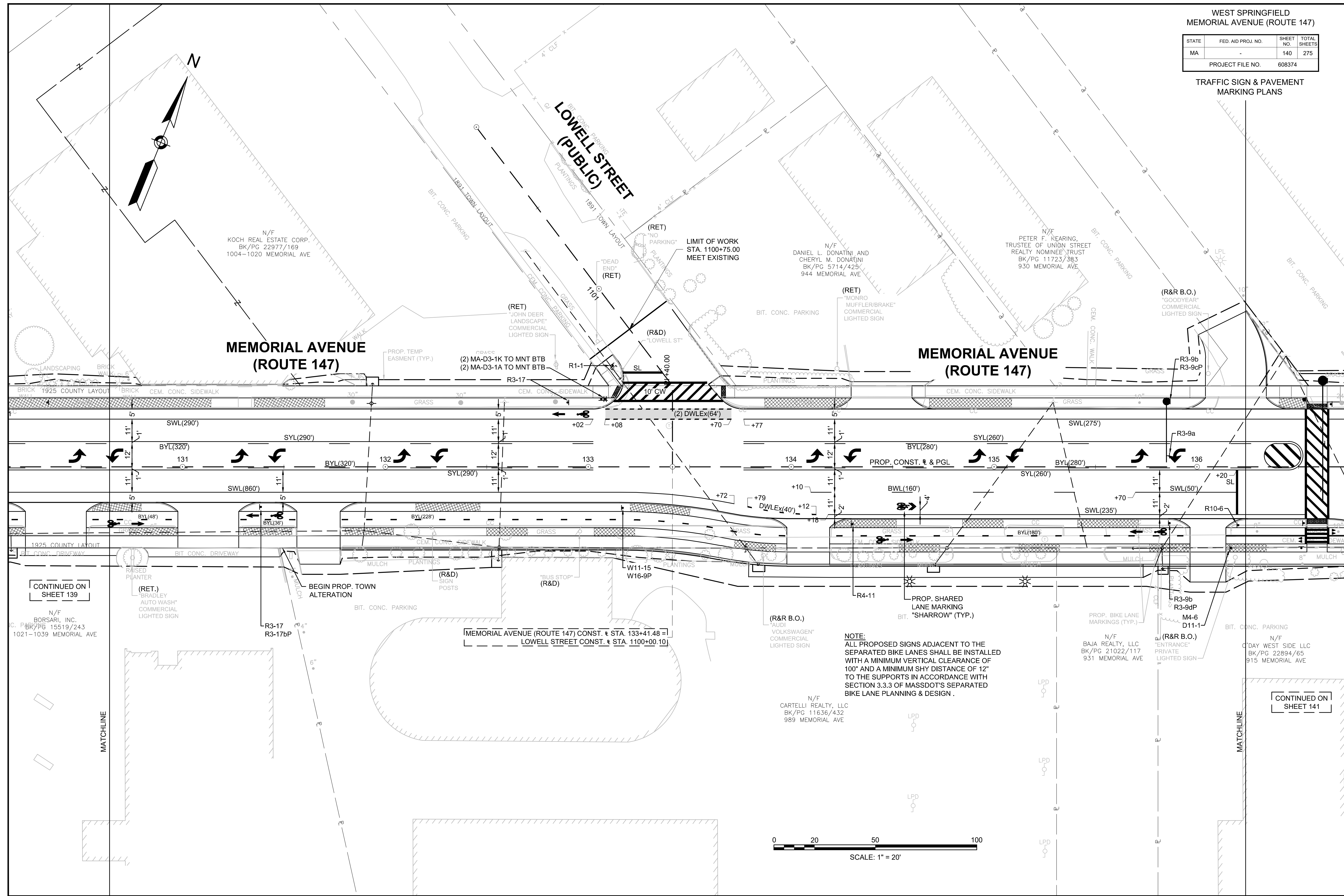
CONTINUED ON SHEET 138

CONTINUED ON SHEET 140

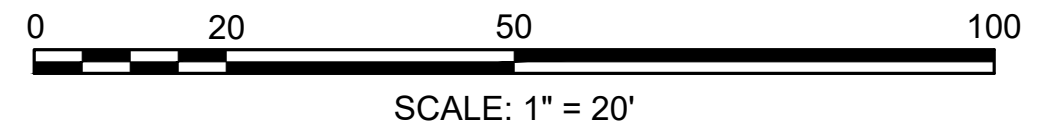
WEST SPRINGFIELD
MEMORIAL AVENUE (ROUTE 147)

STATE	FED. AID PROJ. NO.	SHEET NO.	TOTAL SHEETS
MA	-	140	275
PROJECT FILE NO.		608374	

TRAFFIC SIGN & PAVEMENT MARKING PLANS



NOTE:
ALL PROPOSED SIGNS ADJACENT TO THE SEPARATED BIKE LANES SHALL BE INSTALLED WITH A MINIMUM VERTICAL CLEARANCE OF 100" AND A MINIMUM SHY DISTANCE OF 12" TO THE SUPPORTS IN ACCORDANCE WITH SECTION 3.3.3 OF MASSDOT'S SEPARATED BIKE LANE PLANNING & DESIGN.



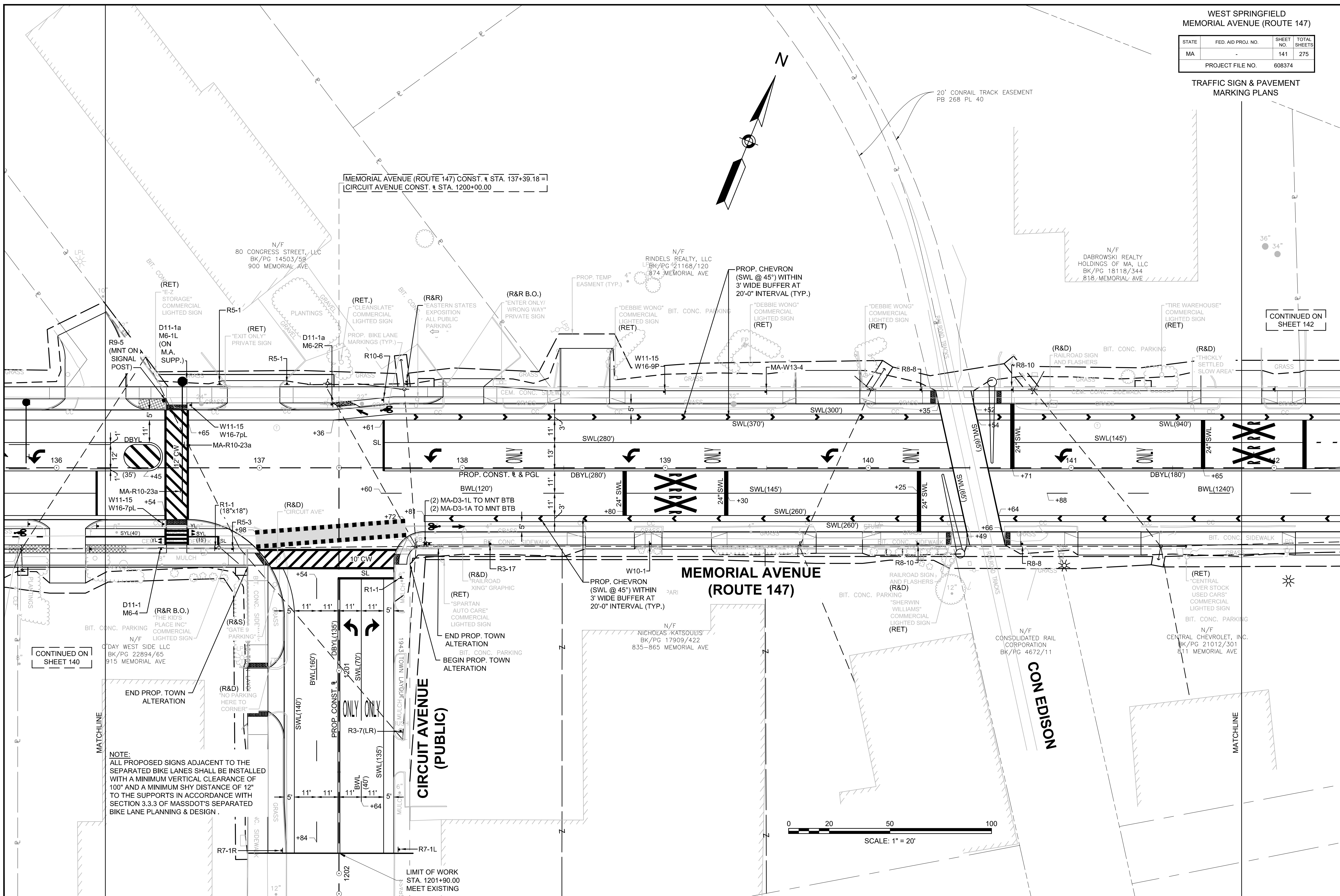
CONTINUED ON SHEET 139

CONTINUED ON SHEET 141

WEST SPRINGFIELD
MEMORIAL AVENUE (ROUTE 147)

STATE	FED. AID PROJ. NO.	SHEET NO.	TOTAL SHEETS
MA	-	141	275
PROJECT FILE NO.		608374	

TRAFFIC SIGN & PAVEMENT MARKING PLANS



MEMORIAL AVENUE (ROUTE 147) CONST. STA. 137+39.18 =
CIRCUIT AVENUE CONST. STA. 1200+00.00

PROP. CONST. & PGL
BWL(120')
(2) MA-D3-1L TO MNT BTB
(2) MA-D3-1A TO MNT BTB

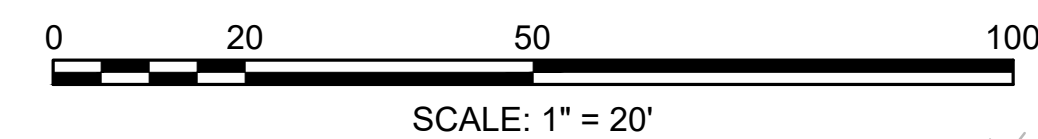
MEMORIAL AVENUE
(ROUTE 147)

CIRCUIT AVENUE
(PUBLIC)

CONTINUED ON
SHEET 140

CONTINUED ON
SHEET 142

NOTE:
ALL PROPOSED SIGNS ADJACENT TO THE
SEPARATED BIKE LANES SHALL BE INSTALLED
WITH A MINIMUM VERTICAL CLEARANCE OF
100" AND A MINIMUM SHY DISTANCE OF 12"
TO THE SUPPORTS IN ACCORDANCE WITH
SECTION 3.3.3 OF MASSDOT'S SEPARATED
BIKE LANE PLANNING & DESIGN.

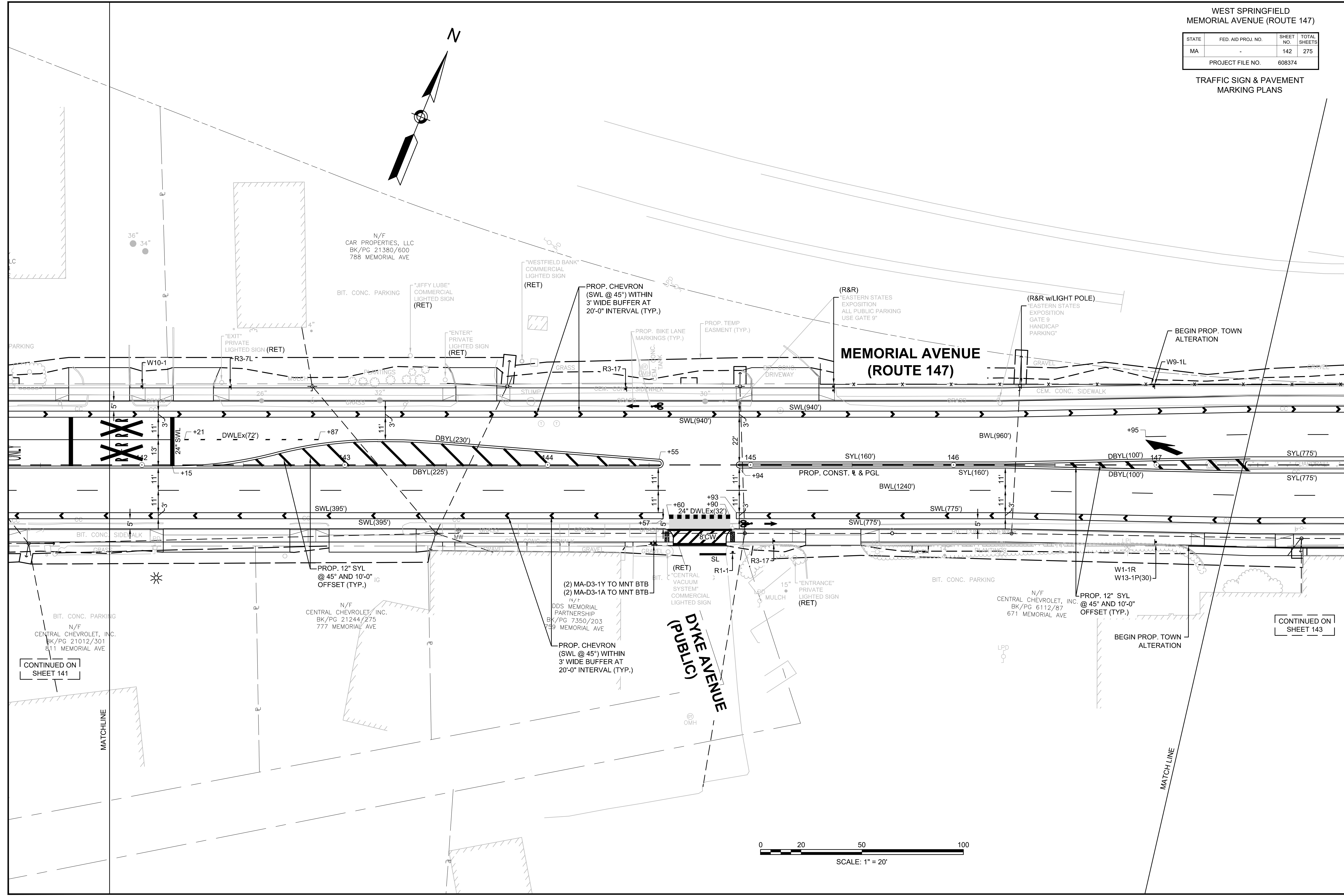


WEST SPRINGFIELD
MEMORIAL AVENUE (ROUTE 147)

STATE	FED. AID PROJ. NO.	SHEET NO.	TOTAL SHEETS
MA	-	142	275
PROJECT FILE NO.		608374	

TRAFFIC SIGN & PAVEMENT
MARKING PLANS

14145_HD_(RMS).DWG Picked on 30-Jun-2020 10:53 PM



CONTINUED ON SHEET 141

CONTINUED ON SHEET 143



MATCHLINE

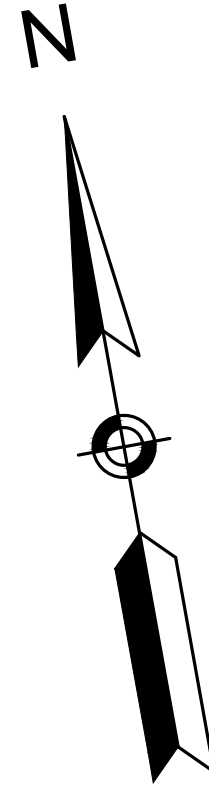
(R&D)
"ONE WAY"
"NO PARKING
ANY TIME"

CONTINUED ON
SHEET 149

WEST SPRINGFIELD MEMORIAL AVENUE (ROUTE 147)

STATE	FED. AID PROJ. NO.	SHEET NO.	TOTAL SHEETS
MA	-	143	275
PROJECT FILE NO.		608374	

TRAFFIC SIGN & PAVEMENT MARKING PLANS



BRIDGE STREET (PUBLIC)

(R&R TO STA. 153+57 LT)
"BUS STOP" PROP. BIKE LANE MARKINGS (TYP.)

END PROP. TOWN ALTERATION
R6-1L/R6-1R TO MNT BTB;
R5-1
BEGIN PROP. TOWN ALTERATION

PROP. YELLOW CURB MARKERS (TYP.)
@ 6'-0" MAX SPACING

PROP. CHEVRON (SWL @ 45") WITHIN 3' WIDE BUFFER AT 20'-0" INTERVAL (TYP.)

(R&R TO STA. 153+57 LT)
"BUS STOP" PROP. BIKE LANE MARKINGS (TYP.)

(2) MA-D3-1M TO MNT BTB
(2) MA-D3-1A TO MNT BTB;
R5-1

(R&D)
"NO PARKING ANY TIME"

(R&D)
"LEFT CURVE"
GRAPHIC
"25 MPH"

(R&R TO STA. 153+57 LT)
"BUS STOP" PROP. BIKE LANE MARKINGS (TYP.)

END PROP. TOWN ALTERATION

N/F
CONSOLIDATED RAIL CORPORATION
BK/PG 4672/11

BILLBOARD

BILLBOARD

BILLBOARD

BILLBOARD

BILLBOARD

CONTINUED ON
SHEET 142

PC +36.15
W4-2L
R3-4

R4-7

R4-7

R4-7

R4-7

R4-7

R4-7

R4-7

R4-7

R4-7

R4-7

R4-7

R4-7

R4-7

R4-7

N/F
CENTRAL CHEVROLET, INC.
BK/PG 6112/57
671 MEMORIAL AVE

LPD

MATCHLINE

GRAVEL

BUSH

BUSH

BUSH

BUSH

BUSH

BUSH

BUSH

BUSH

BUSH

BUSH

BUSH

BUSH

BUSH

BUSH

BUSH

BUSH

BUSH

BUSH

W1-1L
W13-1P(30)

M3-4
MA-M1-5a(147)

CFM CONC SIDEWALK

SWL(280')

SWL(280')

SWL(280')

SWL(280')

SWL(280')

SWL(280')

SWL(280')

SWL(280')

SWL(280')

SWL(280')

SWL(280')

SWL(280')

SWL(280')

SWL(280')

SWL(280')

SWL(280')

SWL(280')

SWL(280')

SWL(280')

SWL(280')

SWL(280')

SWL(280')

SWL(280')

SWL(280')

SWL(280')

SWL(280')

SWL(280')

SWL(280')

SWL(280')

SWL(280')

SWL(280')

SWL(280')

SWL(280')

SWL(280')

MEMORIAL AVENUE (ROUTE 147)

MEMORIAL AVENUE (ROUTE 147) CONST. & STA. 150+15.37 =
BRIDGE STREET CONST. & STA. 1300+00.00

(R&R, B.O.)
"CHEVROLET CENTRAL"
COMMERCIAL LIGHTED SIGN

N/F
CENTRAL CHEVROLET, INC.
BK/PG 6112/57
671 MEMORIAL AVE

END PROP. TOWN ALTERATION

PROP. CHEVRON (SWL @ 45") WITHIN 3' WIDE BUFFER AT 20'-0" INTERVAL (TYP.)

"BUS STOP" (R&R TO STA. 154+31, 42' RT)

(R&S)
"ENTER" PRIVATE LIGHTED SIGN

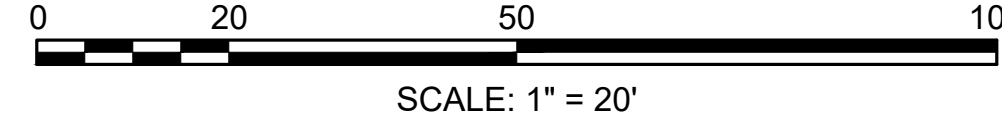
COMMERCIAL LIGHTED SIGN (RET)

CONTINUED ON
SHEET 144

N/F
1150 UNION STREET CORPORATION
L.C.C. NO. 20761
CERT. NO. 31387
DOC. NO. 54459
1150 UNION ST

LPD

MATCHLINE

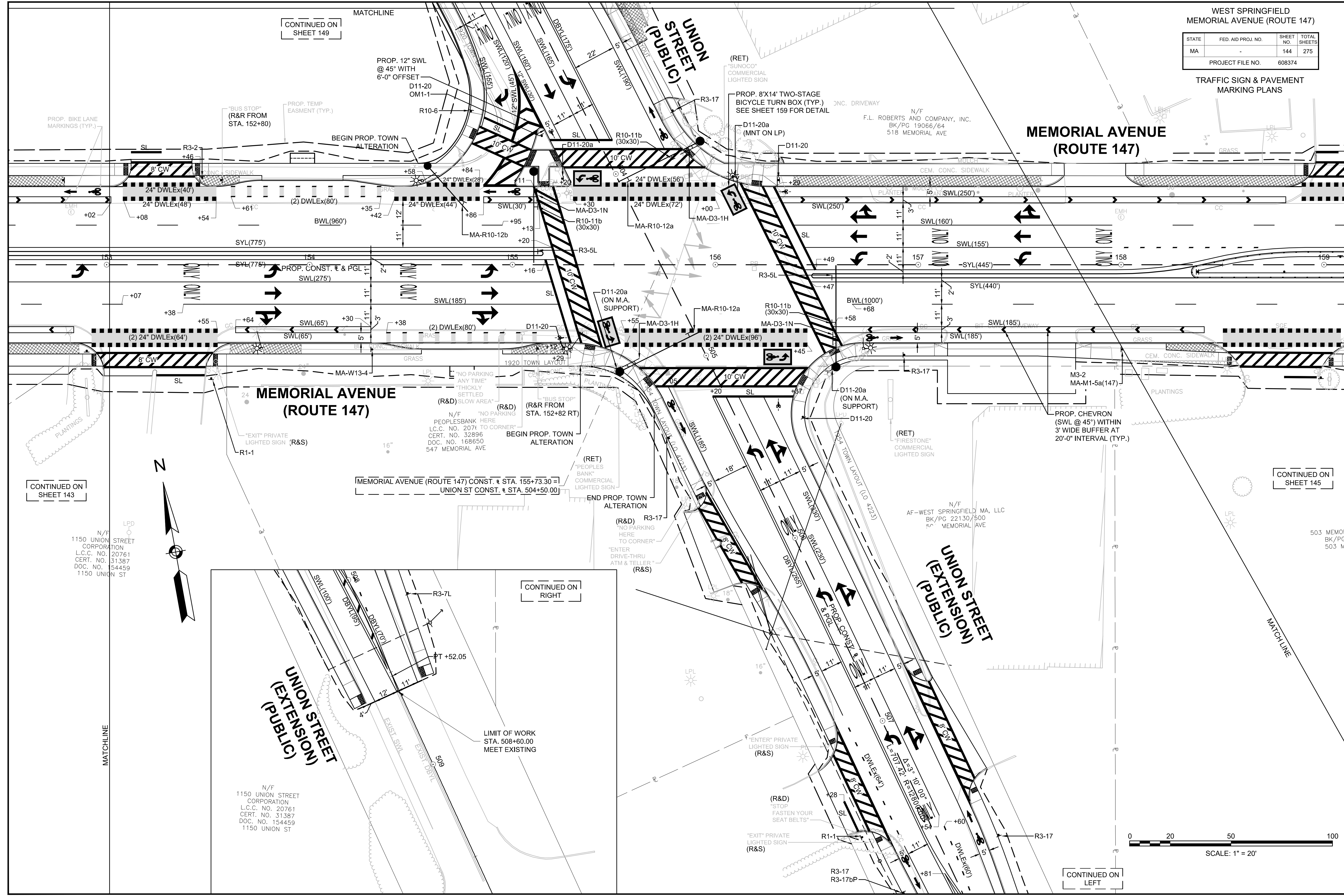


14-145_HD_(R&S).DWG
Plotted on 30-Jun-2020 10:53 PM

WEST SPRINGFIELD
MEMORIAL AVENUE (ROUTE 147)

STATE	FED. AID PROJ. NO.	SHEET NO.	TOTAL SHEETS
MA		144	275
PROJECT FILE NO.		608374	

TRAFFIC SIGN & PAVEMENT MARKING PLANS

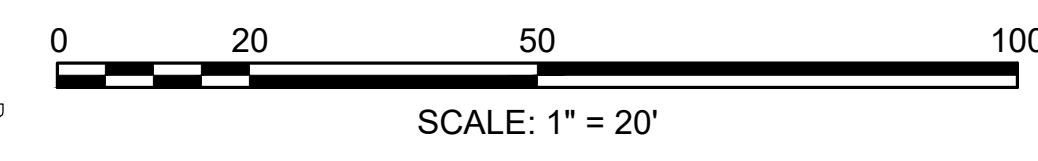
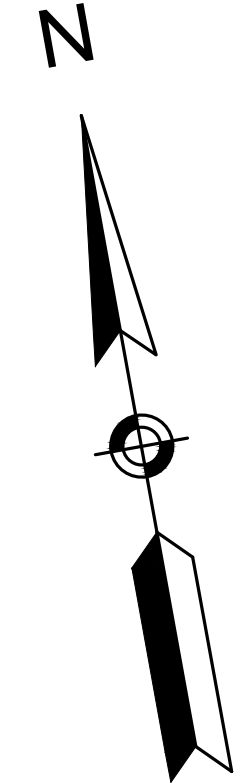


CONTINUED ON SHEET 143

CONTINUED ON SHEET 145

CONTINUED ON RIGHT

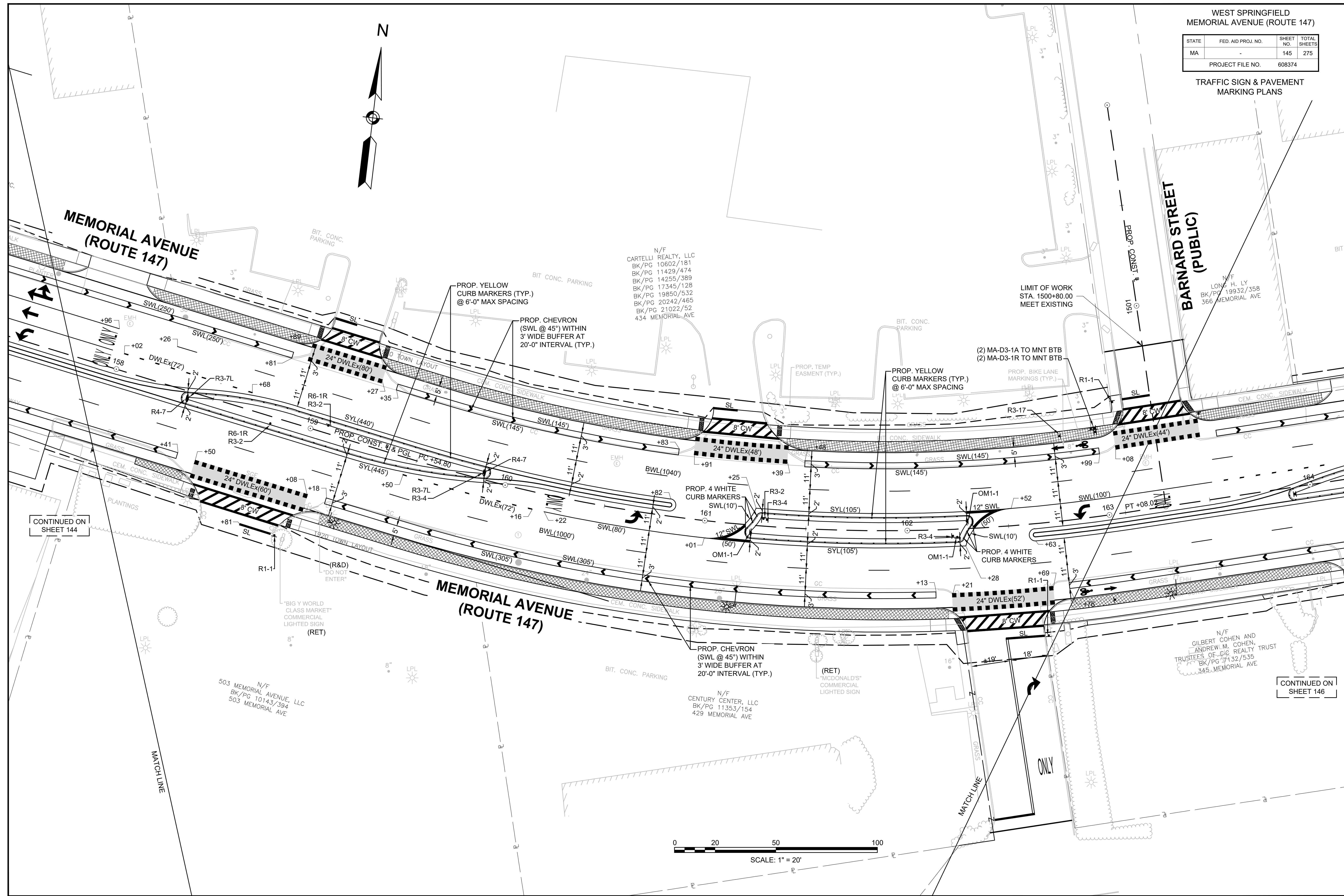
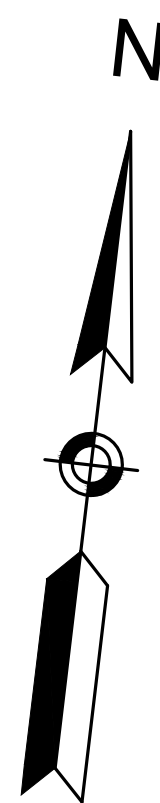
CONTINUED ON LEFT



WEST SPRINGFIELD
MEMORIAL AVENUE (ROUTE 147)

STATE	FED. AID PROJ. NO.	SHEET NO.	TOTAL SHEETS
MA	-	145	275
PROJECT FILE NO.		608374	

TRAFFIC SIGN & PAVEMENT
MARKING PLANS



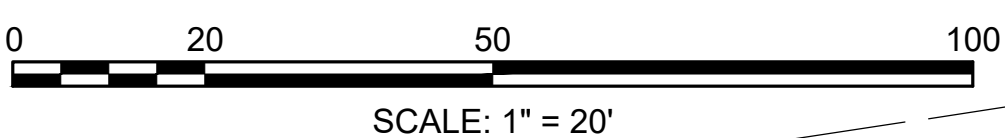
CONTINUED ON
SHEET 144

CONTINUED ON
SHEET 146

N/F
503 MEMORIAL AVENUE, LLC
BK/PG 10143/394
503 MEMORIAL AVE

N/F
CARTELLI REALTY, LLC
BK/PG 10602/181
BK/PG 11429/474
BK/PG 14255/389
BK/PG 17345/128
BK/PG 19850/532
BK/PG 20242/465
BK/PG 21022/52
434 MEMORIAL AVE

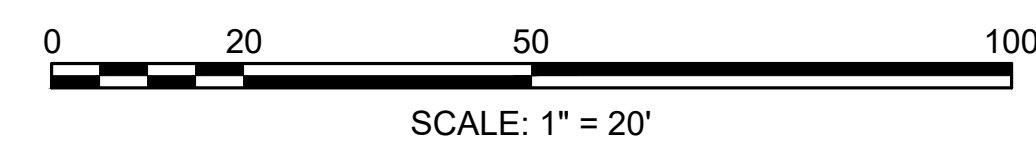
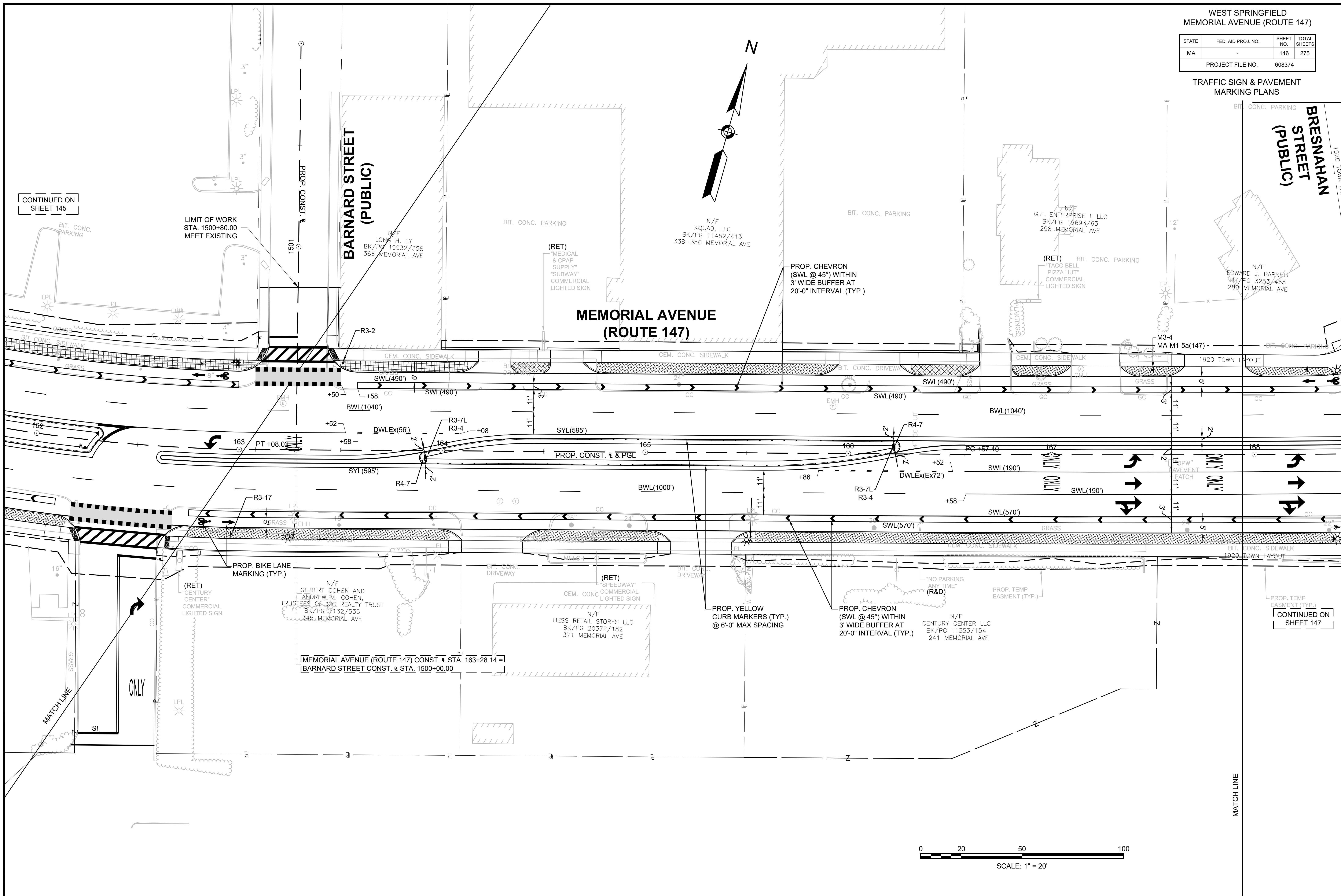
N/F
GILBERT COHEN AND
ANDREW M. COHEN,
TRUSTEES OF CIC REALTY TRUST
BK/PG 7132/535
345 MEMORIAL AVE



WEST SPRINGFIELD
MEMORIAL AVENUE (ROUTE 147)

STATE	FED. AID PROJ. NO.	SHEET NO.	TOTAL SHEETS
MA	-	146	275
PROJECT FILE NO.		608374	

TRAFFIC SIGN & PAVEMENT MARKING PLANS



CONTINUED ON SHEET 145

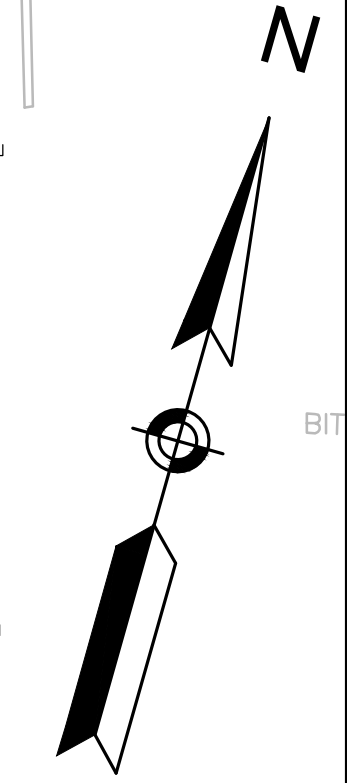
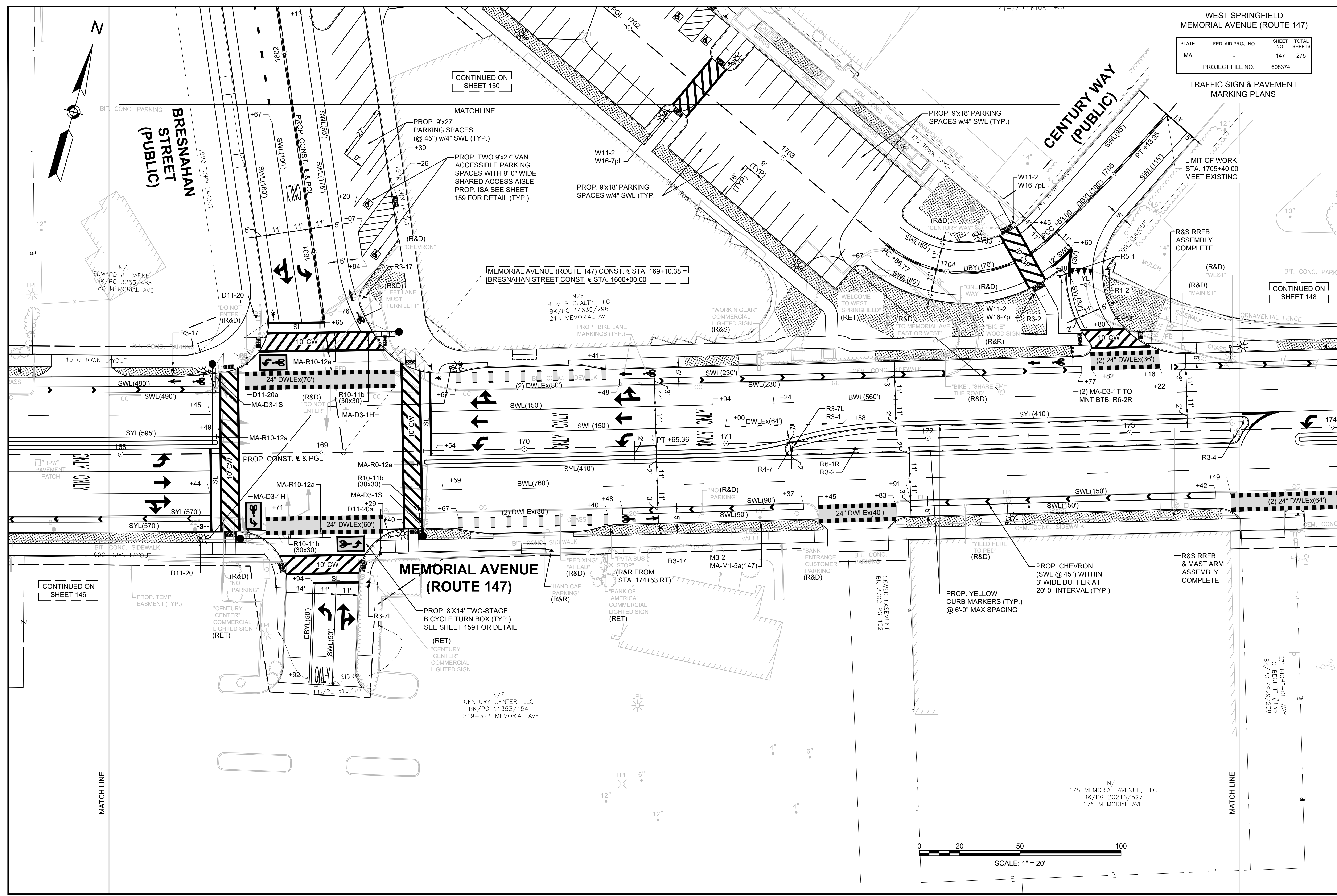
CONTINUED ON SHEET 147

14145_HD_(RMS).DWG Picked on 30-Jun-2020 10:54 PM

WEST SPRINGFIELD
MEMORIAL AVENUE (ROUTE 147)

STATE	FED. AID PROJ. NO.	SHEET NO.	TOTAL SHEETS
MA		147	275
PROJECT FILE NO.		608374	

TRAFFIC SIGN & PAVEMENT MARKING PLANS



CONTINUED ON SHEET 146

CONTINUED ON SHEET 150

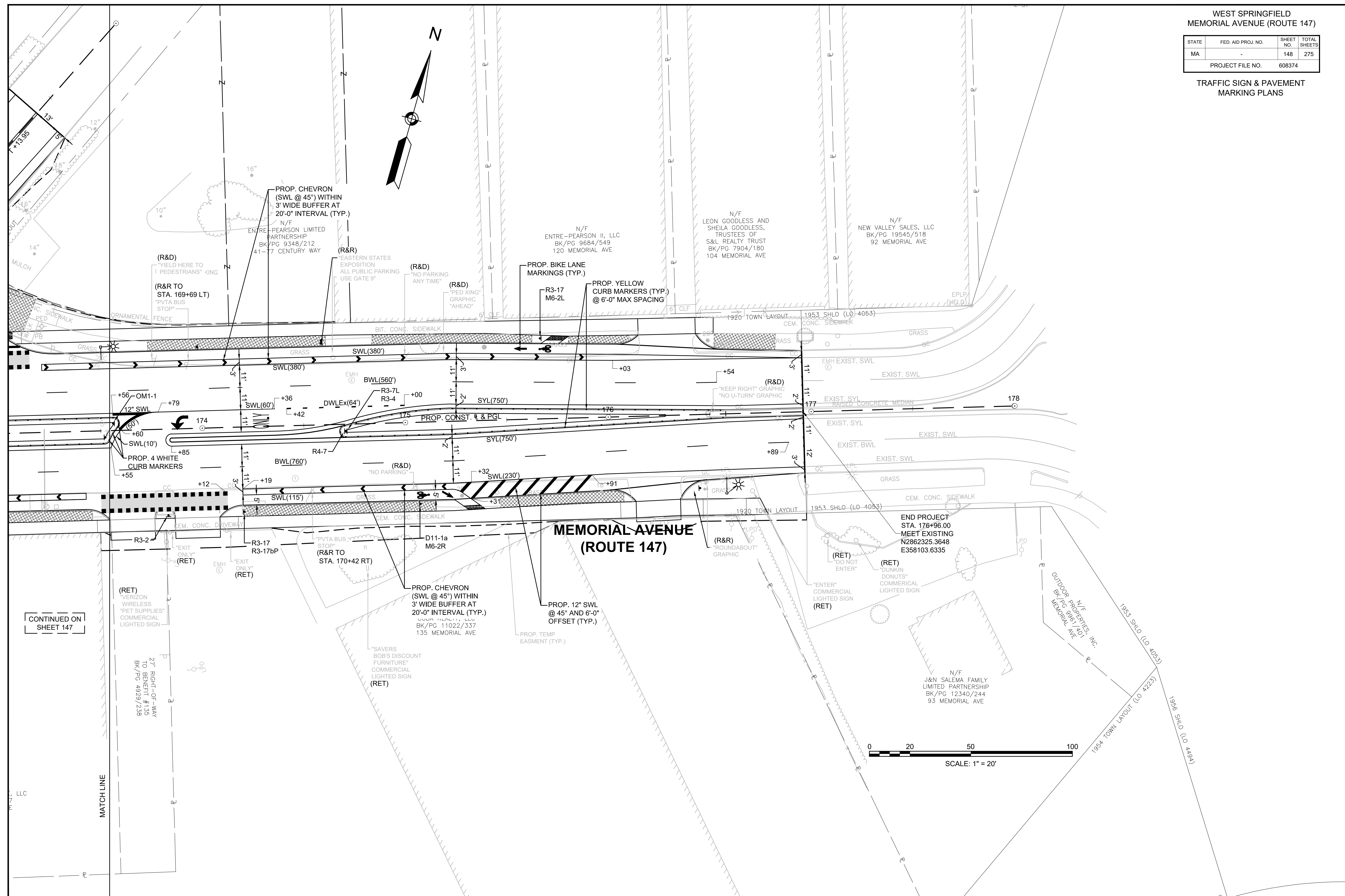
CONTINUED ON SHEET 148



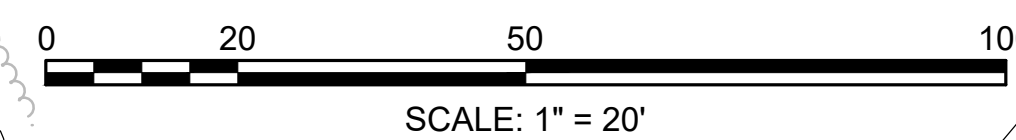
WEST SPRINGFIELD
MEMORIAL AVENUE (ROUTE 147)

STATE	FED. AID PROJ. NO.	SHEET NO.	TOTAL SHEETS
MA	-	148	275
PROJECT FILE NO.		608374	

TRAFFIC SIGN & PAVEMENT
MARKING PLANS

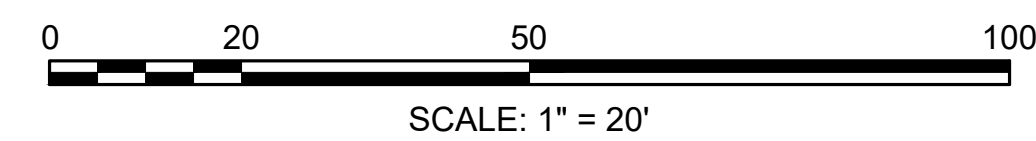
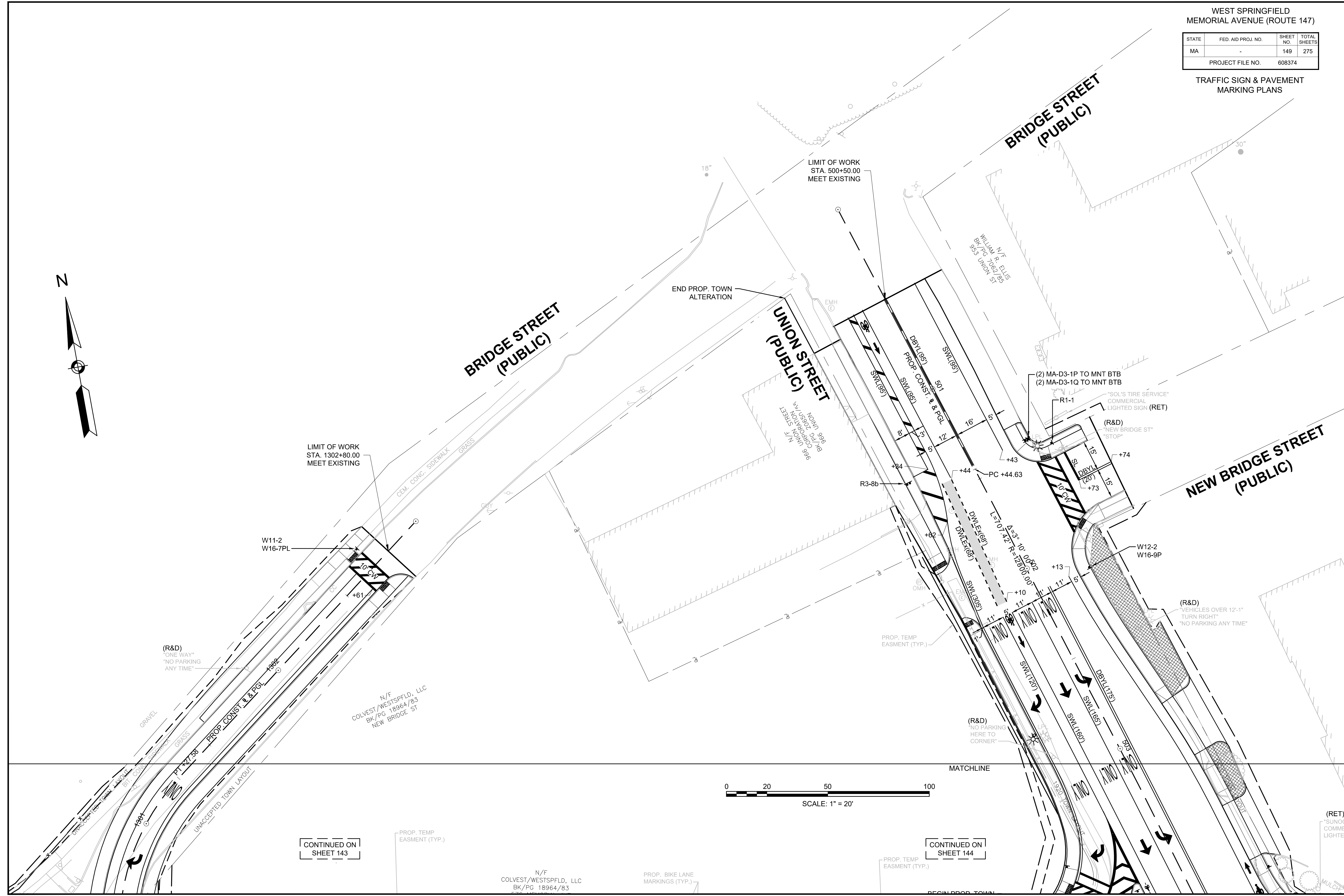
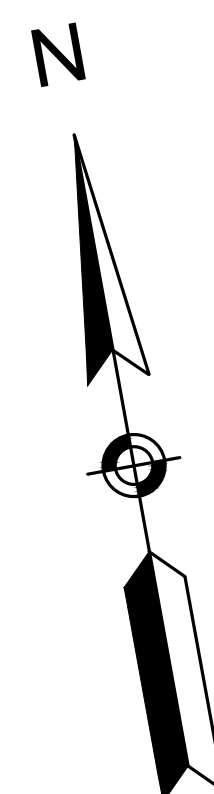


CONTINUED ON
SHEET 147



STATE	FED. AID PROJ. NO.	SHEET NO.	TOTAL SHEETS
MA	-	149	275
PROJECT FILE NO.		608374	

TRAFFIC SIGN & PAVEMENT
MARKING PLANS



CONTINUED ON
SHEET 143

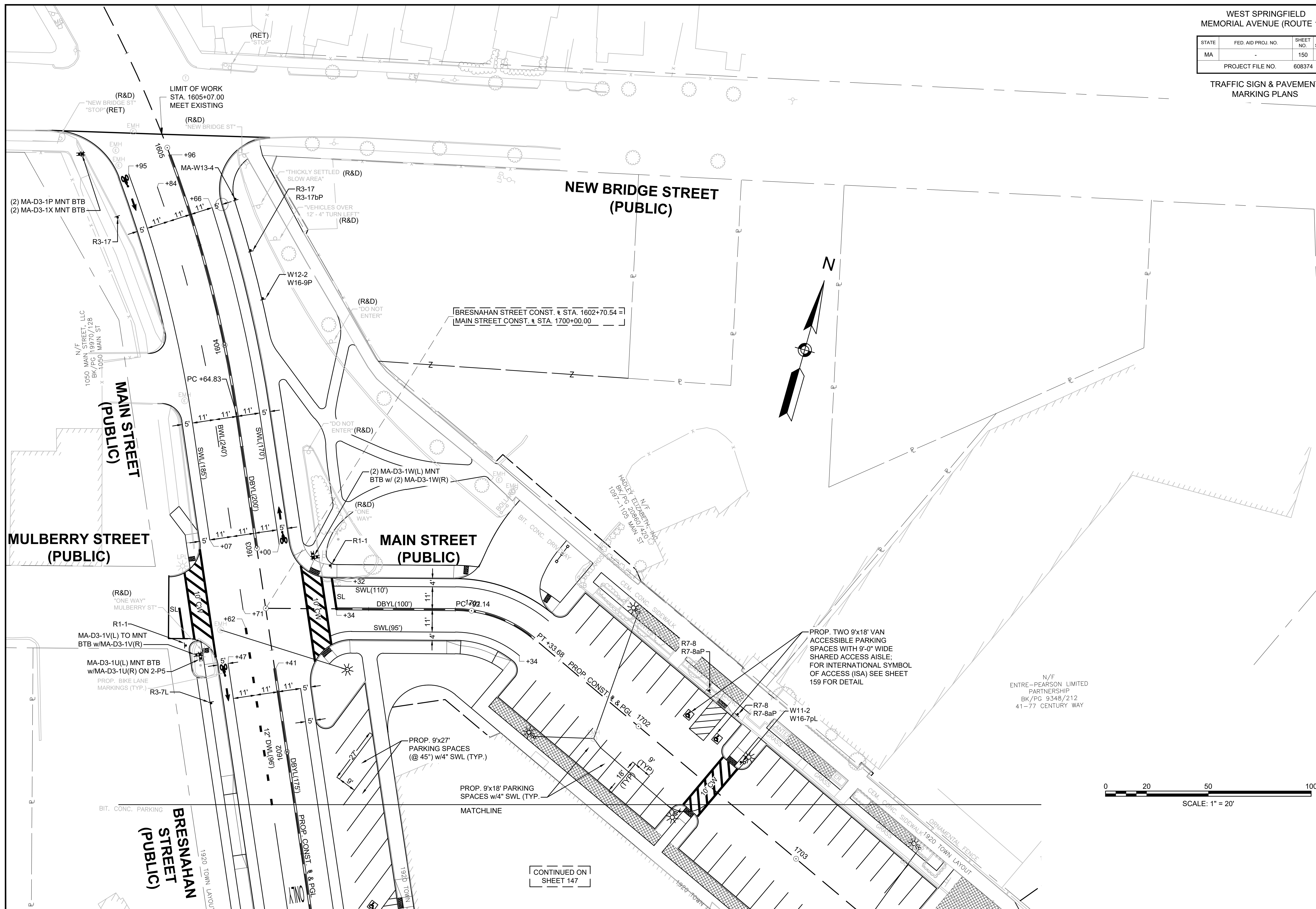
CONTINUED ON
SHEET 144

N/F
COLVEST/WESTSPFLD, LLC
BK/PG 18964/83
NEW BRIDGE ST

WEST SPRINGFIELD
MEMORIAL AVENUE (ROUTE 147)

STATE	FED. AID PROJ. NO.	SHEET NO.	TOTAL SHEETS
MA	-	150	275
PROJECT FILE NO.		608374	

TRAFFIC SIGN & PAVEMENT
MARKING PLANS



CONTINUED ON
SHEET 147

